

Cochlear™ Pairing Guide

(for iPhone®/iPod touch®/iPad®)



This guide shows how to pair your Cochlear™ Nucleus® 8, Nucleus 7, Nucleus 7 SE or Kanso® 2 Sound Processor* with your iPhone®, iPod touch® or iPad®, so you can stream audio and control and monitor your sound processor(s). You can also use the Nucleus Smart App† to control and monitor your sound processor(s).

* Not all products are available in all countries.

† The Cochlear Nucleus Smart App is available on App Store. For compatibility information visit www.cochlear.com/compatibility

Pair your processor(s)

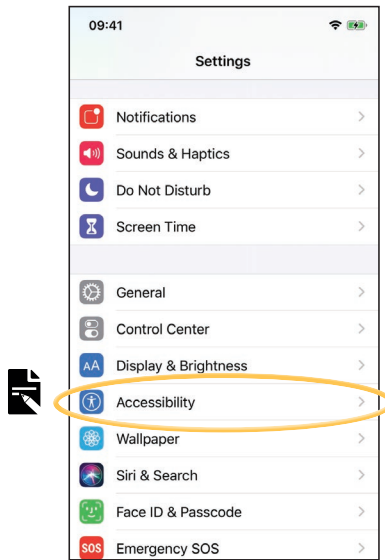
Note

- These instructions are for iOS13. Other versions of iOS may have slightly different screens.
- Some screens will show your name and sound processor model. Images shown in this guide are of example screens only and may differ to what you see on your iPhone or iPad. Use the instructions in this guide in conjunction with the corresponding screens on your iPhone or iPad to guide you through pairing.
- If you have other sound processor(s) or hearing aid(s) already paired, you need to unpair them first. See page 2 for unpairing instructions.

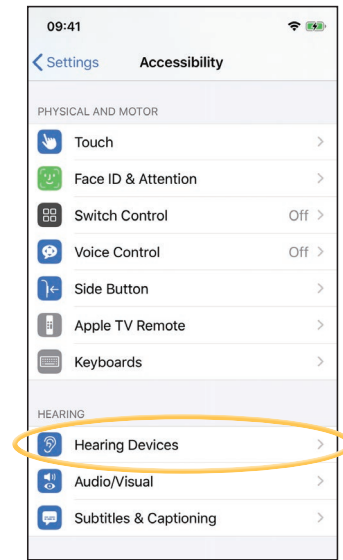
1 On your device, open **Settings**.



2 Tap **Accessibility**.



3 Tap **Hearing Devices**.



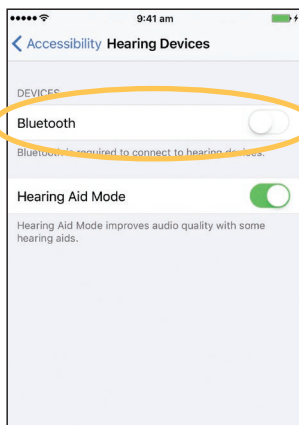
Note

If the *Hearing Devices* screen opens now, go to Step 4.

NOTE

These instructions are for iOS13. For earlier versions you may need to tap **General** then **Accessibility**.

4 If **Bluetooth** is not turned on, select it now.



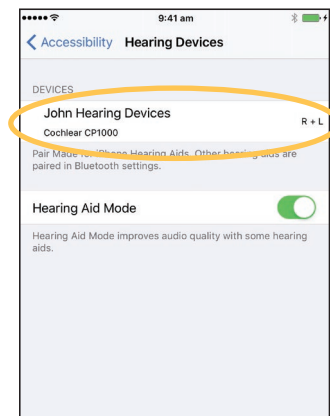
5 Turn your sound processor(s) **OFF**, then **ON**.

If you have two sound processors, do both of them, one after the other. Your device searches for your sound processor(s)...

Note

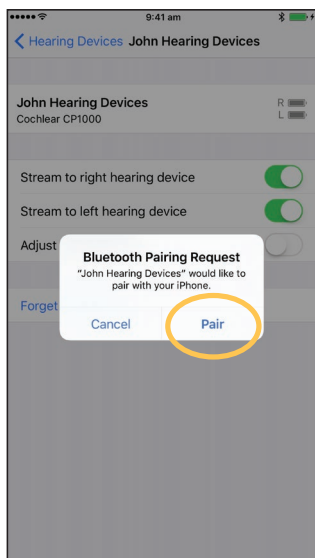
If you use a **sound processor** and a **compatible hearing aid**, you can also pair both of them in this way.

6 Select your name when it displays on the screen.



...CONTINUED OVER THE PAGE...

- 7 Tap **Pair** to confirm pairing. If you have two processors, you will see this message twice.



- 8 Wait for the pairing indicators on your processor. Pairing can take up to 2 minutes.

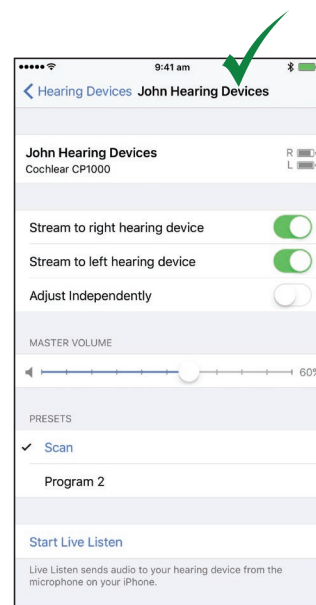
Finish pairing:

- **Blue flash** for 4 seconds
- **Ripple tone.**



Note
Don't start to stream audio until pairing is finished.

- 9 Successful pairing!



Now you can set up and use the **Nucleus Smart App!** See *Nucleus Smart App User Guide* for details.



- **Radio interference:** when trying to pair or connect your sound processor with your iPhone, iPod touch or iPad, you may experience interference from some devices, e.g. microwave ovens, wireless routers or TV Streamers. If this happens, move away from the device and try again.
- **Pair with multiple Apple devices:** you can pair your sound processor with up to 5 compatible Apple devices, but you can only control it from one Apple device at any time.

Unpair your processor(s)

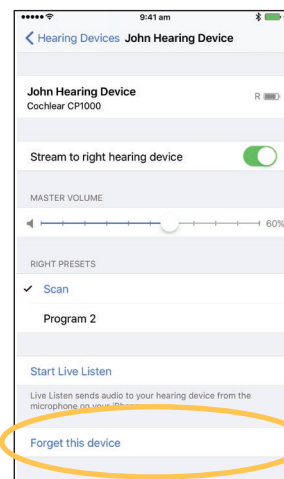
If you change your sound processor(s), for example if you receive a new sound processor from the repair centre, you need to:

- First **Unpair** the old sound processor(s),
- Then **Pair** the new sound processor(s).

- 1 Navigate to *Settings > Accessibility > Hearing Devices* (see page 1).
- 2 Select the paired sound processor(s).
- 3 Tap *Forget this device* to unpair the sound processor(s).



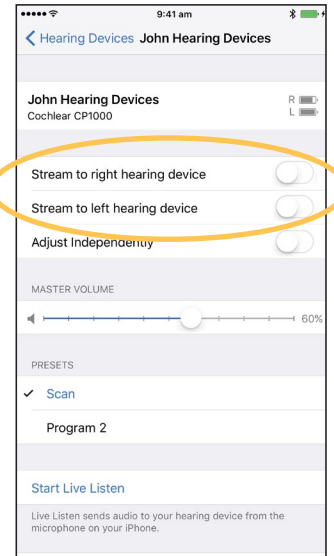
Note
If you have two sound processors paired to your iPhone, iPod touch or iPad, both will be unpaired.



Disable audio streaming

To disable audio streaming:

- 1 Navigate to *Settings > Accessibility > Hearing Devices* (see page 1).
- 2 Select the paired sound processor(s).
- 3 Tap *Stream to hearing device* to disable streaming to your sound processor(s).



- For more information on the app, see the *Nucleus Smart App User Guide*.
- For more information on the sound processor, see your *Sound Processor User Guide*.
- Visit us online for tips, how-to videos and more:
www.cochlear.com/

Cochlear Ltd (ABN 96 002 618 073) 1 University Avenue, Macquarie University, NSW 2109, Australia
Tel: +61 2 9428 6555 Fax: +61 2 9428 6352
Cochlear Ltd (ABN 96 002 618 073) 14 Mars Road, Lane Cove, NSW 2066, Australia Tel: +61 2 9428 6555
Fax: +61 2 9428 6352
EC REP Cochlear Deutschland GmbH & Co. KG Karl-Wiechert-Allee 76A, 30625 Hannover, Germany
Tel: +49 511 542 770 Fax: +49 511 542 7770
Cochlear Europe Ltd 6 Dashwood Lang Road, Bourne Business Park, Addlestone, Surrey KT15 2HJ, United Kingdom Tel:
+44 1932 26 3400 Fax: +44 1932 26 3426
www.cochlear.com

Cochlear, Hear now. And always, Kanso, Nucleus, and the elliptical logo are either trademarks or registered trademarks of Cochlear Limited. Apple, iCloud, iPhone, iPod touch and iPad are trademarks of Apple Inc, registered in the U.S. and other countries.