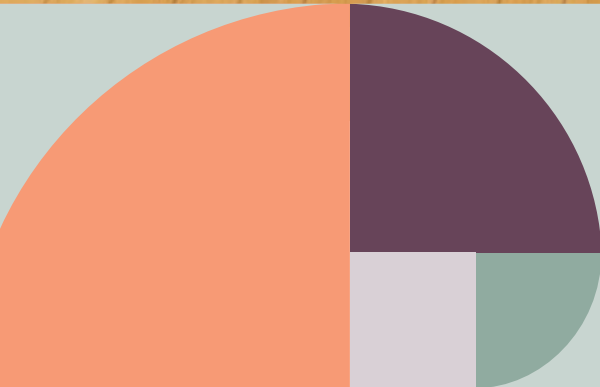




Cochlear Classroom Care Guide



Starting school skills checklist

Starting school checklist

Complete this checklist with your child in mind. Remember, this checklist is not a test and it designed to be used as a basic guide only. Effective spoken language is key to applying these skills. We recommend using the results to help inform your child’s educators on their current skill set.



I know my colours

☐

☐

☐

Yes

Trying

Not Yet



I recognise my initial sounds

☐

☐

☐

Yes

Trying

Not Yet



I am interested in books

☐

☐

☐

Yes

Trying

Not Yet



I enjoy outdoor play

☐

☐

☐

Yes

Trying

Not Yet



I can recite the alphabet

☐

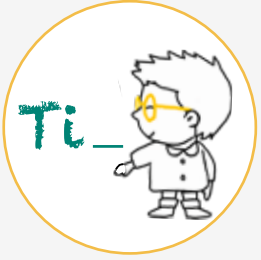
☐

☐

Yes

Trying

Not Yet



I can recognise my own name

☐

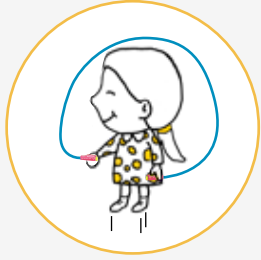
☐

☐

Yes

Trying

Not Yet



I can skip

☐

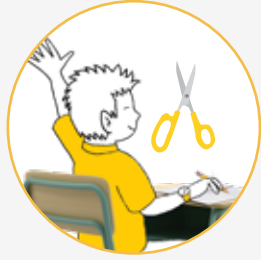
☐

☐

Yes

Trying

Not Yet



I can use scissors

☐

☐

☐

Yes

Trying

Not Yet



I try to write my name and words I know

☐

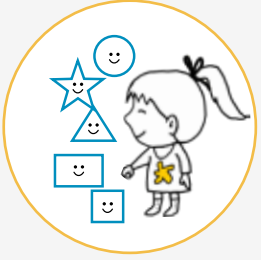
☐

☐

Yes

Trying

Not Yet



I know my shapes

☐

☐

☐

Yes

Trying

Not Yet



I can dress myself

☐

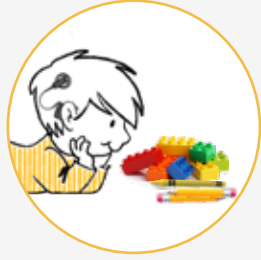
☐

☐

Yes

Trying

Not Yet



I can take care of my things

☐

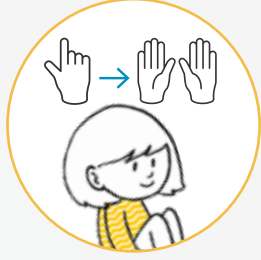
☐

☐

Yes

Trying

Not Yet



I can count from 1 to 10

☐

☐

☐

Yes

Trying

Not Yet



I recognise the numbers 1 to 10

☐

☐

☐

Yes

Trying

Not Yet



I am a good listener

☐

☐

☐

Yes

Trying

Not Yet



I can play well with others

☐

☐

☐

Yes

Trying

Not Yet



I can match groups with numbers

☐

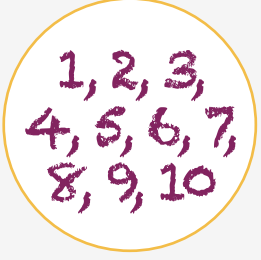
☐

☐

Yes

Trying

Not Yet



I can sequence numbers 1 to 10

☐

☐

☐

Yes

Trying

Not Yet



I speak and listen to others in class

☐

☐

☐

Yes

Trying

Not Yet



I can join the others in song, drama and talks

☐

☐

☐

Yes

Trying

Not Yet



I can write some numbers

☐

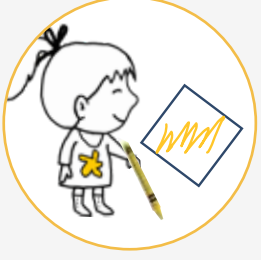
☐

☐

Yes

Trying

Not Yet



I can colour neatly

☐

☐

☐

Yes

Trying

Not Yet



I can follow instructions

☐

☐

☐

Yes

Trying

Not Yet



I can share with others and take turns

☐

☐

☐

Yes

Trying

Not Yet

Hear now. And always

Cochlear is dedicated to helping people with moderate to profound hearing loss experience a world full of hearing. As the global leader in implantable hearing solutions, we have helped more than 700,000 people of all ages to hear and connect with life's opportunities.

We aim to give people the best lifelong hearing experience and access to next generation technologies. We collaborate with leading clinical, research and support networks to advance hearing science and improve care.

That's why more people choose Cochlear than any other hearing implant company.

www.cochlear.com

Please seek advice from your health professional about treatments for hearing loss. Outcomes may vary, and your health professional will advise you about the factors which could affect your outcome. Always follow the directions for use. Not all products are available in all countries. Please contact your local Cochlear representative for product information.

Cochlear™ Nucleus® implant systems are intended for the treatment of moderately severe to profound hearing loss. Baha implant systems are intended for the treatment of moderate to profound hearing loss Cochlear, Hear now. And Always, the elliptical logo, True Wireless, Nucleus, ForwardFocus*, Kanso and Baha are either trademarks or registered trademarks of Cochlear group of companies.