

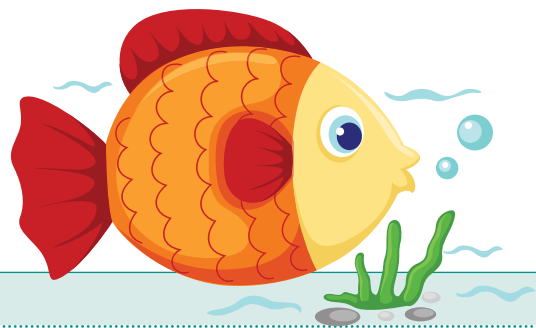
## Domain and goal

- Uses a singing voice
- Matches the rhythm and some vowel and early consonant content

## Activities

### Sing! Sing! Sing some more!

- Your child should now have a different voice which he uses when 'singing' compared with a 'talking' voice.
- As you sing a line in a song, pause and allow your child to sing the line also. He will most likely not be singing any words, but should be matching the rhythm of the song. If you are singing the Heidi Ho elephant song, your child should match the slow pace of the song. If you are singing the Bus song, your child should match the fast, short syllables. Listen to your child's imitations of the songs and ensure he is matching the rhythm.
- Your child may also be matching some of the vowel content of the songs. In the song 'See Saw', your child should be matching the vowels /i/ /a/. He most likely will not have the /s/ on the words, which is age and stage appropriate. In the 'Bumble Bee' song, your child should be producing the /b/ at various times during the singing, and may well be adding the /ʌ/ vowel to the /b/, as well as matching the rhythm.
- Sing all the songs on a regular basis to ensure the child is developing a singing voice and matching the suprasegmental aspects as well as the vowels and early consonants.



Date	What did your child do?