

# Loudness scaling chart

How loud is the sound?



**Too loud – STOP**



**Just right**



**Too soft**



**No sound**

■ Cochlear Ltd (ABN 96 002 618 073) 1 University Avenue, Macquarie University, NSW 2109, Australia T: +61 2 9428 6555 F: +61 2 9428 6352

**[www.cochlear.com](http://www.cochlear.com)**

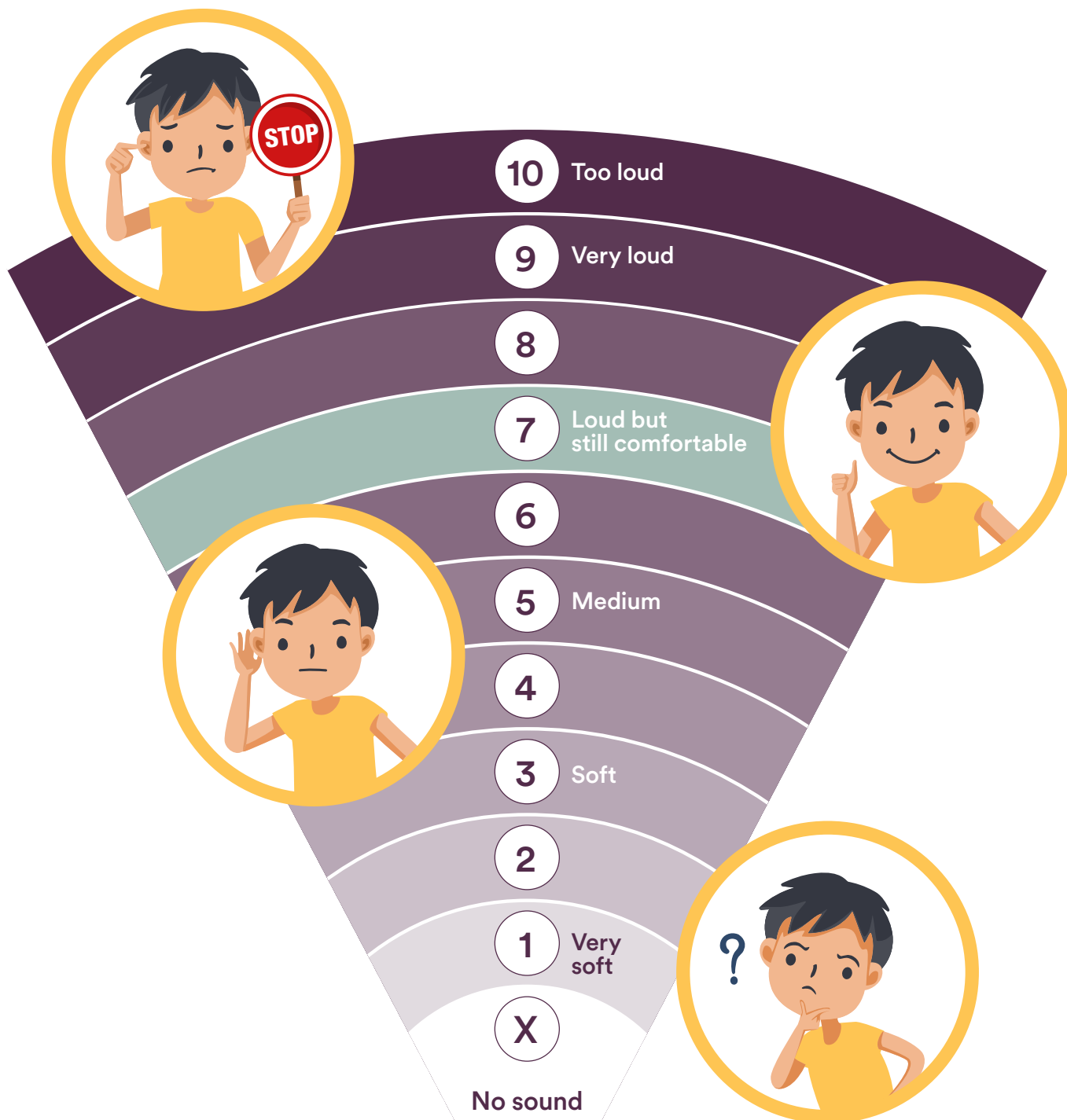
In Australia, Cochlear Nucleus implant systems are intended for the treatment of moderately severe to profound hearing loss. Please seek advice from your health professional about treatments for hearing loss. Outcomes may vary, and your health professional will advise you about the factors which could affect your outcome. Always follow the directions for use. Not all products are available in all countries. Please contact your local Cochlear representative for product information.

Cochlear, Hear now. And always, the elliptical logo, and marks bearing an ® or ™ symbol, are either trademarks or registered trademarks of Cochlear group of companies (unless otherwise noted).

© Cochlear Limited 2022. D2042935 V1 2022-10

# Loudness scaling chart

How loud is the sound?



## Note for clinicians:

- You can choose any number on the scale to ask your client to aim for based on which task you are completing.