



# Cochlear™ Nucleus® Implant Bandage and Splint Kit for MRI (MRI Kit)

## Instructions

*Hear now. And always*



Cochlear®

# MRI Bandage and Splint Kit (MRI Kit)

- Cochlear's Profile CI500 and CI24RE series implants are approved for MRI scans at 1.5 Tesla without having to surgically remove the implant magnet.
- To help prevent discomfort or dislodgement of the implant magnet during an MRI scan, we have made available the MRI Bandage and Splint Kit.<sup>1</sup>
- Use of the MRI Kit is mandatory in the USA for MRI at 1.5 Tesla with the magnet in place.
- A video of these instructions is also available [here](#).
- The MRI Kit contains:



2 x Splints



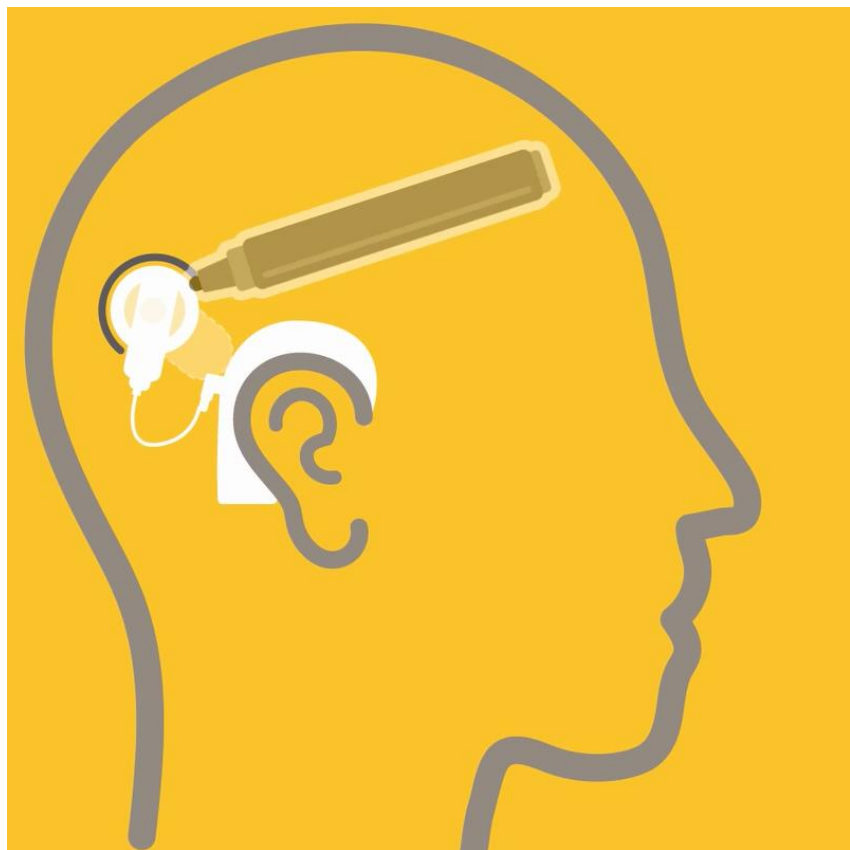
Compression Bandage



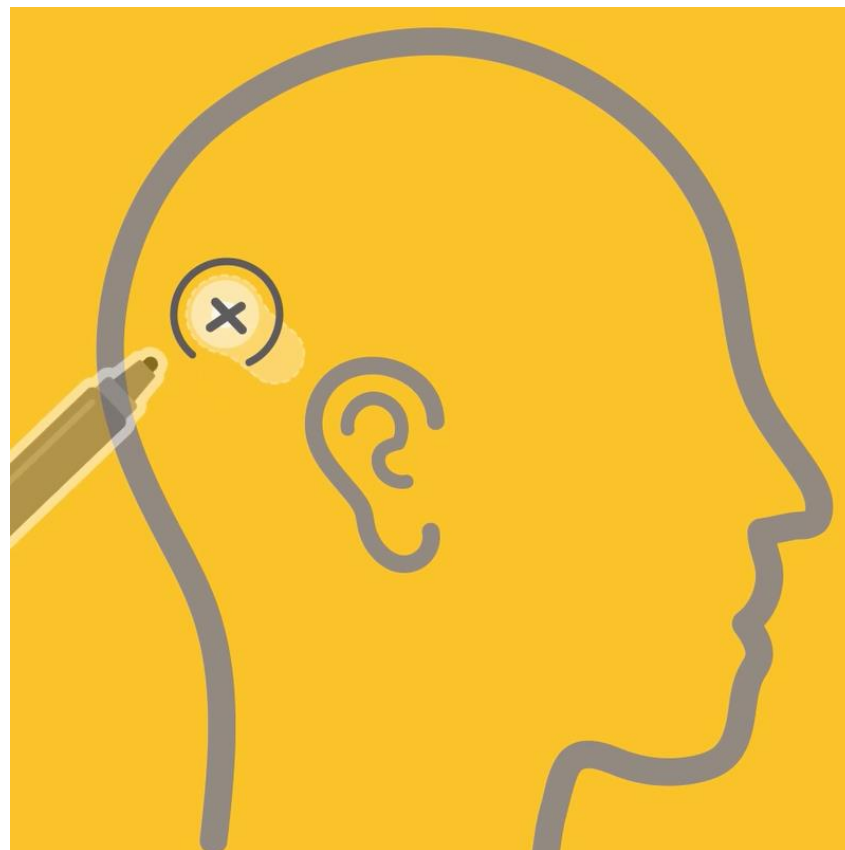
Surgical Tape

<sup>1</sup> The MRI Kit may not be available in all countries. Please contact your local Cochlear representative.

# Step 1 - Locate the Implant Magnet

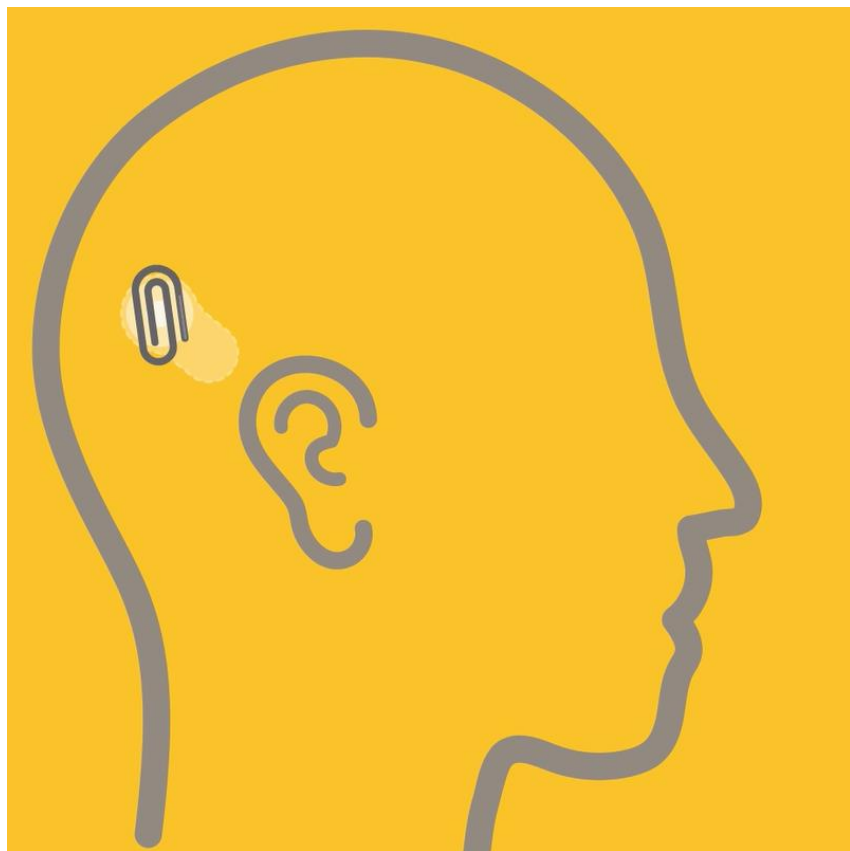


Before entering the MRI room and before removing the sound processor, mark an outline of the sound processor coil on the head.

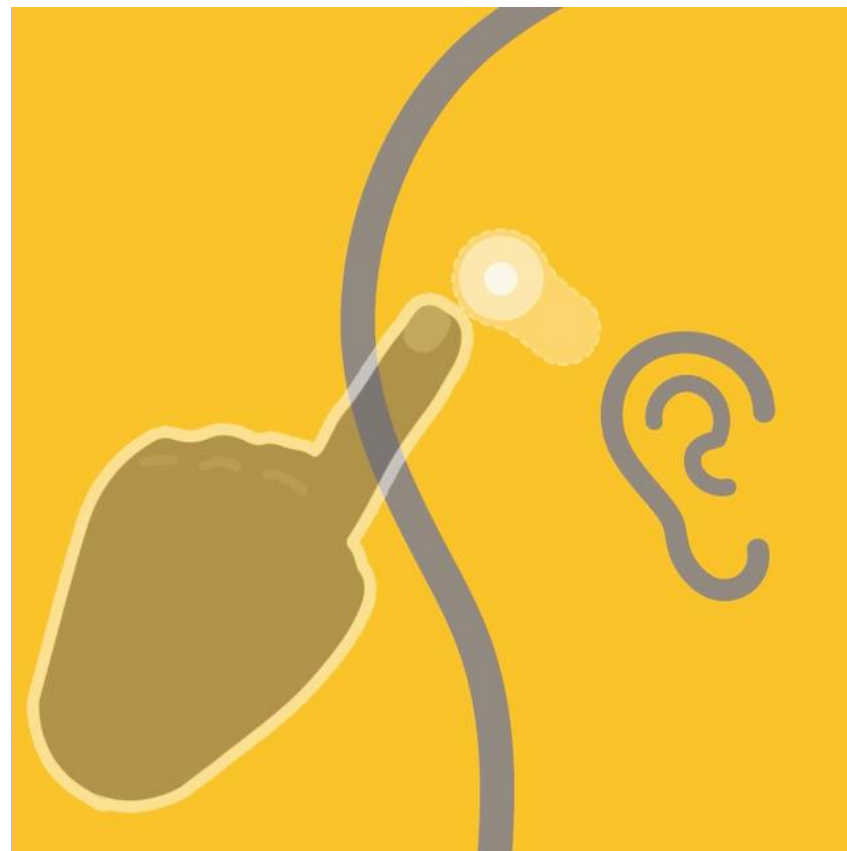


Once the coil has been removed, mark the centre-position of the coil magnet.

# Step 1 - Locate the Implant Magnet



If the location of the implant magnet has not been marked, it may be located by using a ferromagnetic object such as a paperclip, as the object will be attracted to the implant magnet.

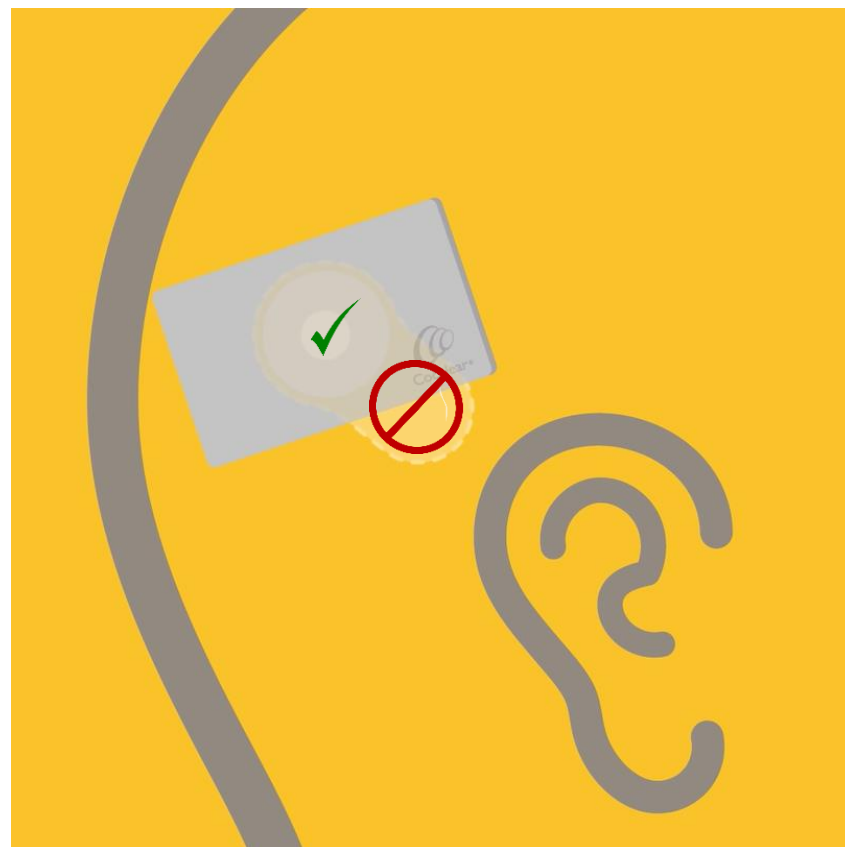


To locate the magnet by touch, gently feel around the implant site to locate the position of the implant coil. The implant magnet will be in the centre.

## Step 2 – Position the Splint on the Head



Remember that ferromagnetic material must be removed before entering the MRI room.

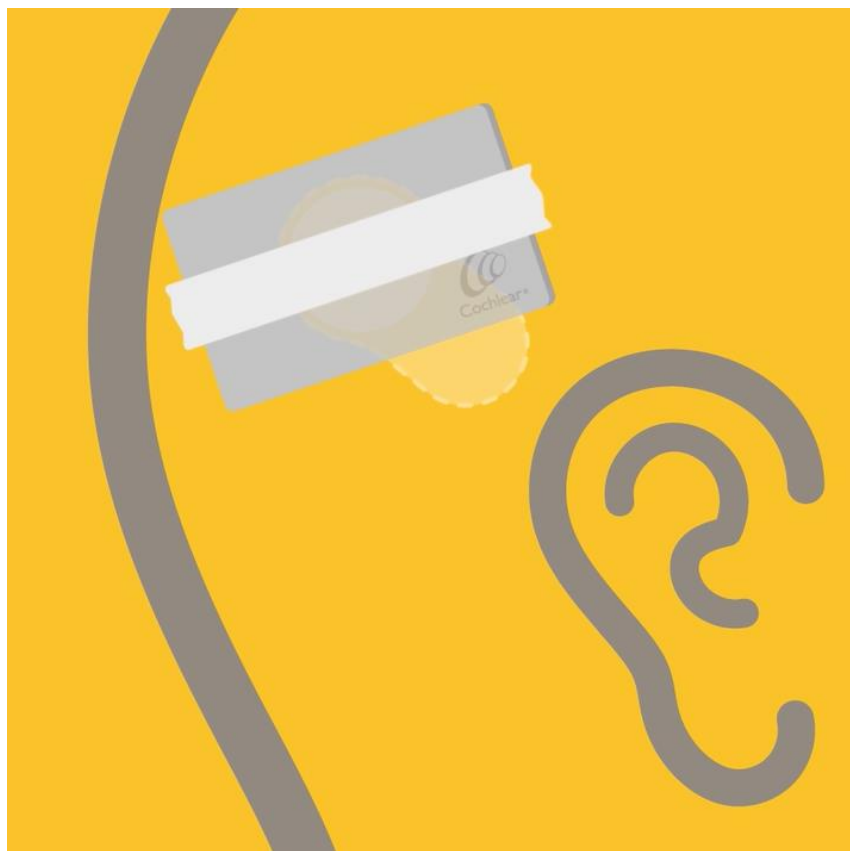


Centre an MRI Kit splint over the implant magnet site and press against the skin.

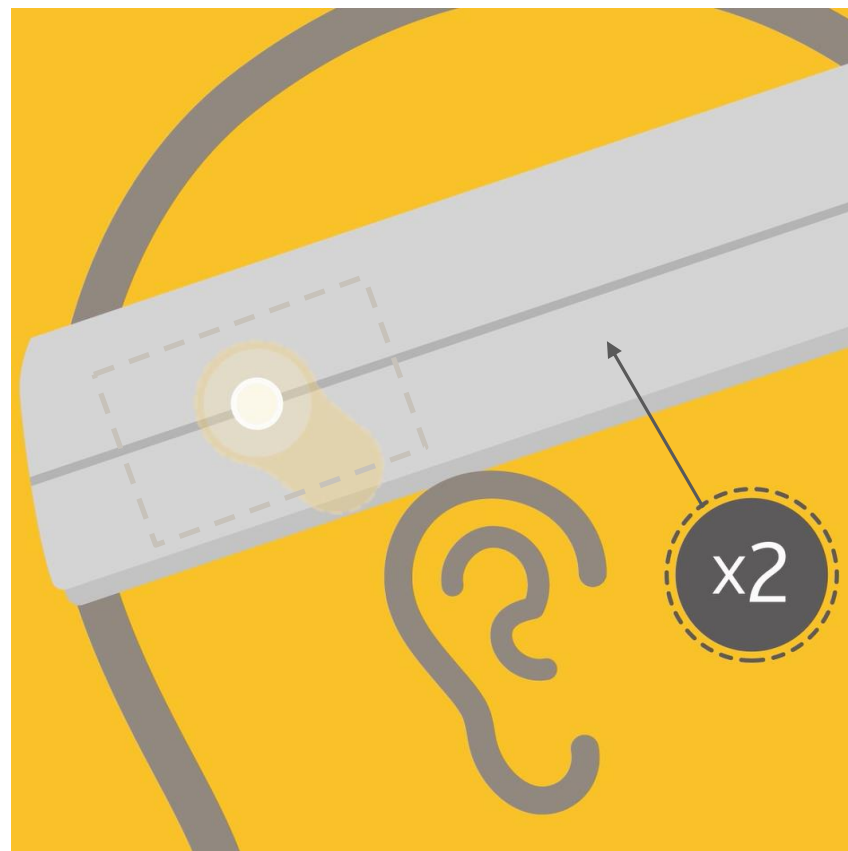


The splint should put pressure over the implant magnet, not the implant body.

## Step 3 – Wrap the Bandage



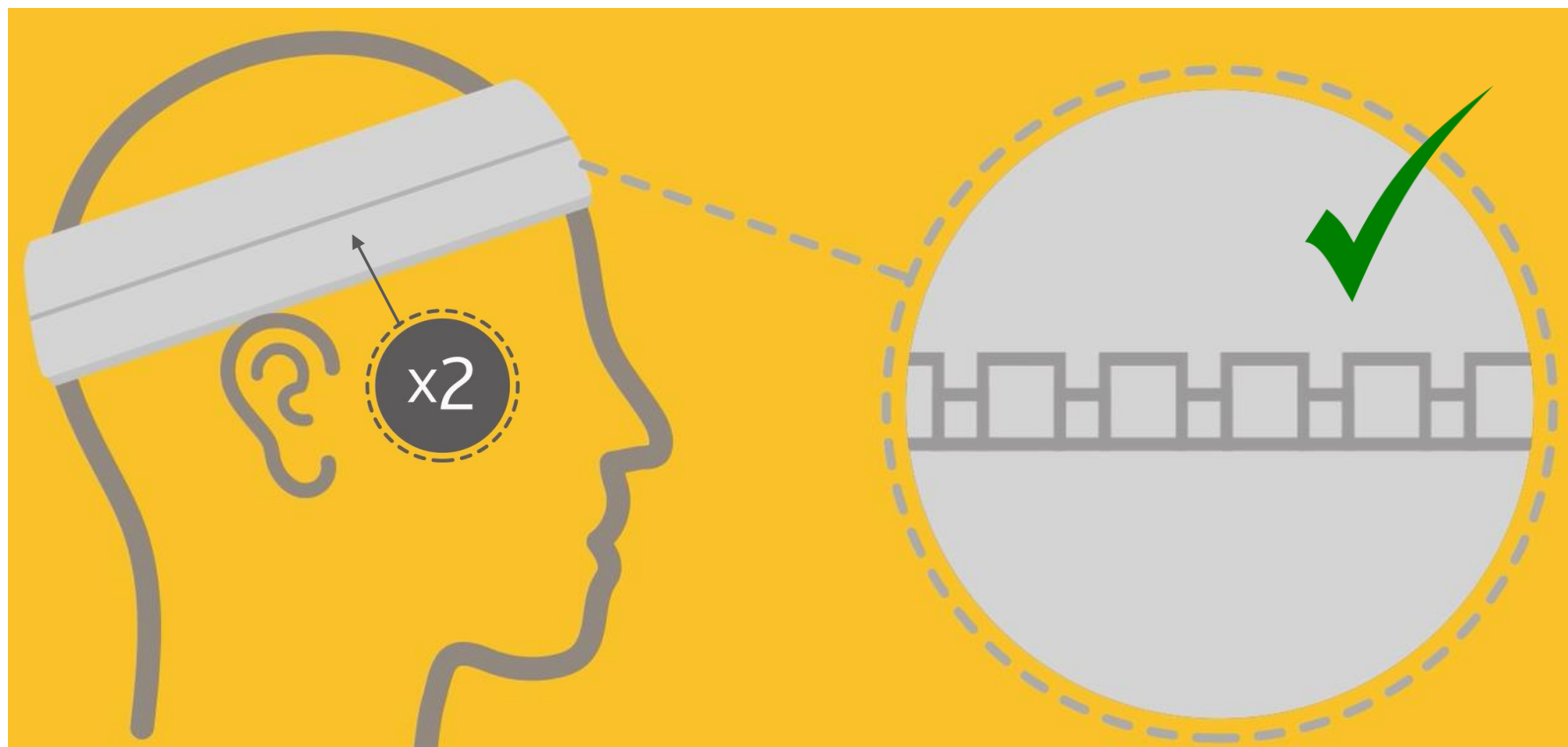
Ensure that the splint is held in place; it may help to use the supplied surgical tape to keep it in position. You may need the assistance of another person to hold the splint in place while you bandage.



Then, wrap the elasticised compression bandage around the head twice, ensuring the centre line of the bandage is fully over the implant magnet. The bandage should completely cover the splint.



## Step 3 – Wrap the Bandage



To ensure that the bandage is tight enough, a minimum of two bandage layers are required.

When the bandage is at the required tightness, the small rectangular tension markers will stretch to become square in shape.

# Step 4 – Tape the Bandage and Perform MRI



Finally, wrap two layers of the surgical tape around the bandage centre line to secure it in place, ensuring that the tape ends overlap.



Once this process is complete you are ready for your MRI.

To obtain your MRI Kit contact your nearest Cochlear office or official Cochlear distributor.





*Hear now. And always*

#### Disclaimer

Please seek advice from your medical practitioner or health professional about treatments for hearing loss. They will be able to advise on a suitable solution for the hearing loss condition. All products should be used only as directed by your medical practitioner or health professional.

The MRI Kit may not be available in all countries. Please contact your local Cochlear representative.