



Cochlear[®]
Hear now. And always

Datasheet

Cochlear™ Baha® 7 Sound Processor

Cochlear Baha Connect System

Powered by the Xidium™ platform and the BCDrive™ II transducer, the Cochlear™ Baha® 7 Sound Processor is a premium-power bone conduction device. It provides output power for a fitting range of up to 55 dB bone conduction thresholds and is indicated for patients with conductive hearing loss, mixed hearing loss and single-sided deafness (SSD).

Features

General	
Dual microphones	✓
Visual indicator (LED)	✓
Tamper resistant battery door*	✓
Button to change programs	✓
BCDrive II – Symmetrical electromagnetic transducer	✓
SmartSound® iQ signal processing	
Automated directionality	✓
Bilateral directionality	✓
Impulse noise reduction	✓
Noise management	✓
Wind noise reduction	✓
Feedback management	✓
Active gain	✓
Direct streaming**	
Bluetooth® LE Audio & Auracast™	✓
Apple (MFi) & Android™ devices	✓
Connected Care**	
Smart App for iOS & Android	✓
Remote Care access through app [§]	✓
Remote firmware update through app	✓
Wireless Accessories compatibility*	
Cochlear Wireless Mini Microphone 2+	✓
Cochlear Wireless TV Streamer	✓
Cochlear Wireless Phone Clip	✓
Cochlear Baha Remote Control 2	✓
Remote Control	✓
Multi-Mic+	✓
TV-Streamer+	✓



Cochlear Baha 7 Sound Processor, 2mm:
P2054771 Blonde, **P2054772** Black, **P2054773** Silver,
P2054774 Brown, **P2054775** Copper, **P2054776** Mint,
P2114095 Lavender



Technical data

General	
Weight, excluding battery	11.5 g
Size	26 mm × 19mm × 12 mm
Processing delay	< 6 ms
Battery type	312 (PR 41, Zinc-Air)
Average battery life time [†]	Typical range: 69 - 136 hours
IP classification [‡]	IP68
Measurements according to IEC60118-9 2019 2nd Ed.	
Output vibratory force level (re. 1 μ N) (90 dB SPL input, FOG)	Max 121 dB HFA 113 dB
Acousto-mechanical sensitivity level (re. 1 μ N / 20 μ Pa) (50 dB SPL input, FOG)	Max 48 dB HFA 42 dB
Reference test acousto-mechanical sensitivity level (re. 1 μ N / 20 μ Pa) (60 dB SPL input, RTS)	HFA 35 dB
Frequency range	200 - 9850 Hz
Equivalent input noise	24 dB SPL
Battery current (65 dB SPL input at 1 kHz)	1.8 mA
Total Harmonic Distortion	
70 dB SPL input at 500 Hz	< 3%
70 dB SPL input at 800 Hz	< 0.3%
65 dB SPL input at 1600 Hz	< 0.3%
60 dB SPL input at 3200 Hz	< 0.3%

FOG = Full On Gain, RTS = Reference Test Gain (FOG minus 7 dB),
HFA = High Frequency Average, SPL = Sound Pressure Level re. 20 μ Pa

* Ordered as separate item.

** The Cochlear Baha 7 Sound Processor is compatible with Apple and Android devices. The Cochlear Baha Smart App is available on App Store and Google Play. For compatibility information visit www.cochlear.com/compatibility

† Dependent on streaming, sound environment and gain settings.

‡ The Cochlear Baha 7 Sound Processor, with battery compartment excluded, is dust and water resistant to level IP68 of the International Standard IEC60529. Refer to the relevant user guide for more information.

§ Remote Assist for Baha for compatible Baha sound processors is intended for a follow-up adjustment or setup of a replacement or upgrade sound processor for suitable qualified patients based on clinical judgment. Only available at clinics that have enrolled in Remote Care.


Cochlear Americas

10350 Park Meadows Drive, Lone Tree, CO 80124, USA
Tel: +1 303 790 9010 Support: Tel: +1 800 483 3123

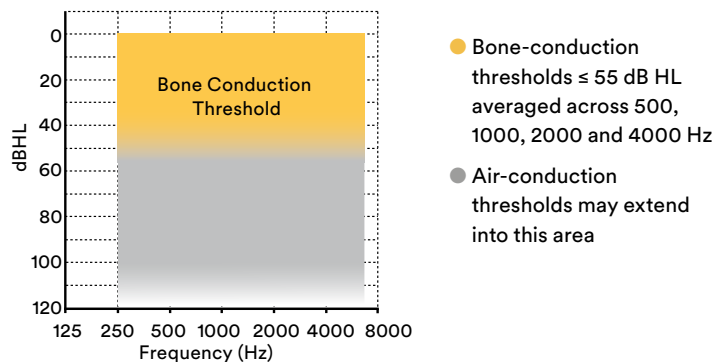
Cochlear Canada Inc.

2500-120 Adelaide Street West, Toronto, ON M5H 1T1, Canada
Tel: +1 800 483 3123 Fax: +1 416 972 5083

www.cochlear.com

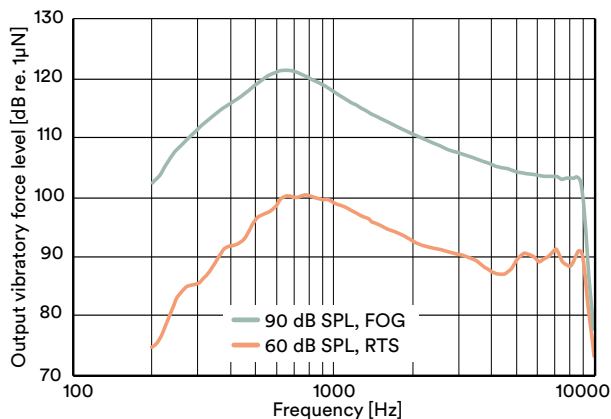
 BUN1096 ISS1 MAY25

Fitting range

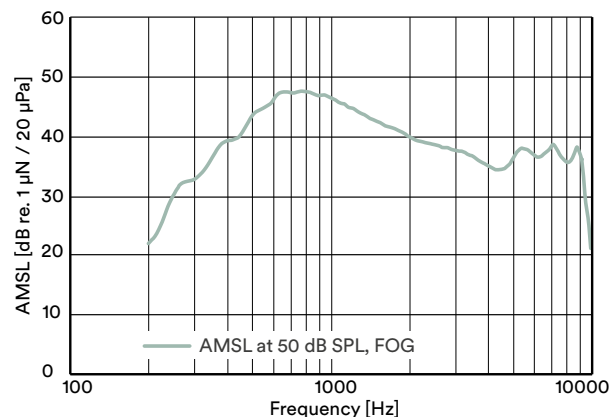


Measured on skull simulator TU-1000

Output vibratory force level frequency responses



Acousto-mechanical sensitivity level frequency response



This material is intended for health professionals. If you are a consumer, please seek advice from your health professional about treatments for hearing loss. Outcomes may vary, and your health professional will advise you about the factors which could affect your outcome. Always read the instructions for use. Not all products are available in all countries. Please contact your local Cochlear representative for product information.

Cochlear's range of Smart Apps and Support Apps are available on App Store and/or Google Play. For information regarding the sound processors, operating systems and devices that are compatible with the Cochlear's range of Smart Apps and Support Apps, visit www.cochlear.com/compatibility

Android is a trademark of Google LLC.

Apple, the Apple logo, iPhone, iPad and iPod are trademarks of Apple Inc., registered in the U.S. and other countries. App Store is a service mark of Apple Inc.

The Bluetooth® and Auracast™ word marks and logos are registered trademarks owned by Bluetooth SIG, Inc. and any use of such marks by Cochlear Limited is under license.

©Cochlear Limited 2025. All rights reserved. Cochlear, Hear now. And always, Nucleus, Kanso, Baha, Osia, the elliptical logo, and marks bearing an ® or ™ symbol are either trademarks or registered trademarks of the Cochlear group of companies (unless otherwise noted).