

Made for  
iPhone | iPad | iPod

Works with  
android

# Bimodal wireless pairing and streaming guide

Cochlear™ Nucleus® 7 and Kanso® 2 Sound Processors and ReSound hearing aids



Smart Hearing Alliance

## Smart bimodal pairing with an Apple® device and Nucleus® 7 Sound Processor

You can stream sound simultaneously to your Nucleus® 7 Sound Processor and compatible ReSound hearing aid\*\* from a compatible Apple device\*.

**Important:** your clinician must link your hearing devices and assign your hearing aid to the correct ear before you can pair to your Apple device.

### Pairing your sound processor and hearing aid to your compatible Apple device

**Non-rechargeable**

**Rechargeable**

- 1 Turn off ReSound hearing aid and Nucleus 7 Sound Processor.
- 2 To pair your sound processor and hearing aid with your compatible Apple device, ensure Bluetooth® is enabled. Then, open the 'Settings' menu.
- 3 Select 'Accessibility'.
- 4 Scroll down and select 'Hearing Devices'.
- 5 Turn on your hearing aid and then turn on your sound processor. Your Apple device will then search for your hearing devices and display them in the 'Devices' section.

- 6 Select your name when it displays on the screen.
- 7 Select 'Pair' to confirm pairing. You will see this message twice.
- 8 When pairing starts:
  - blue flash for 4 seconds
  - 6 beeps.
 Pairing may take up to 2 minutes.  
 When pairing is finished:
  - blue flash for 4 seconds
  - ripple tone.**Note:** Don't start to stream audio until pairing is finished.
- 9 Your sound processor and hearing aid will both be listed under 'your hearing device name' and you should now be able to stream sound directly to both.

## Smart bimodal pairing with an Apple device and Kanso® 2 Sound Processor

You can stream sound simultaneously to your Kanso® 2 Sound Processor and compatible ReSound hearing aid from a compatible Apple device\*.

**Important:** your clinician must link your hearing devices and assign your hearing aid to the correct ear before you can pair to your iOS device.

### Pairing your sound processor and hearing aid to your compatible iOS device

**Non-rechargeable**

**Rechargeable**

- 1 Turn off the ReSound hearing aid and Kanso 2 Sound Processor.
- 2 To pair your sound processor and hearing aid with your compatible iOS device, ensure Bluetooth® is enabled. Then, open the 'Settings' menu.
- 3 Select 'Accessibility'.
- 4 Scroll down and select 'Hearing Devices'.
- 5 Turn on your hearing aid and then turn on your sound processor. Your iOS device will then search for your hearing devices and display them in the 'Devices' section.

- 6 Select your name when it displays on the screen.
- 7 Select 'Pair' to confirm pairing. You will see this message twice.
- 8 During the pairing process you will see a blue flash for 4 seconds, followed by 6 beeps.  
**Note:** Don't start to stream audio until pairing is finished.
- 9 Your sound processor and hearing aid will both be listed under 'your hearing device name' and you should now be able to stream sound directly to both.

### Pairing to more than one iPhone, iPad or iPod touch

You can pair your sound processor and hearing aid with up to five compatible iOS devices, but you can only control them from one iOS device at a time. To manually change connection between devices you have previously paired to, turn off Bluetooth on the connected device, and turn on Bluetooth on the device you want to connect to. Your hearing devices will then automatically connect to the second device.

\* For compatibility information and devices visit [www.Cochlear.com/compatibility](http://www.Cochlear.com/compatibility) and [resound.com/compatibility](http://resound.com/compatibility)  
 \*\* For a list of compatible ReSound hearing aids visit [www.Cochlear.com/nucleus/compatibility](http://www.Cochlear.com/nucleus/compatibility)

\* For compatibility information and devices visit [cochlear.com/compatibility](http://cochlear.com/compatibility) and [resound.com/compatibility](http://resound.com/compatibility)



## Smart bimodal pairing with an Android™ device for Kanso® 2 Sound Processor

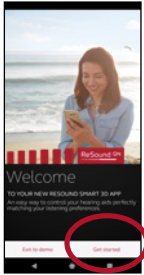


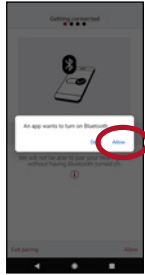
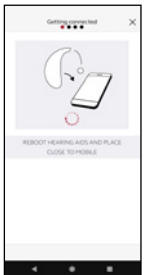
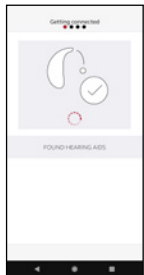


You can stream sound simultaneously to your Kanso® 2 Sound Processor and compatible ReSound hearing aid from a compatible Android device\*. Each hearing device should be individually paired for Android streaming.

**Important:** your clinician must link your hearing devices and assign your ReSound hearing aid to the correct ear before you can pair to your Android device.

### ReSound hearing aid

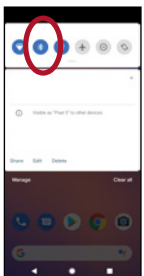
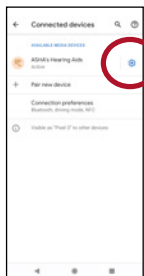
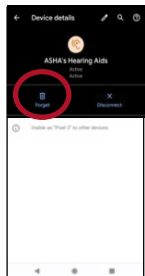
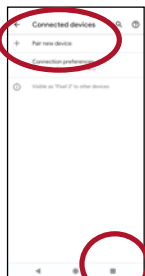
To pair with a compatible Android device you will need the ReSound Smart 3D™ app version 1.8.0 or higher and ReSound firmware version 10042.4200 or later. You can find your firmware version in the Smart 3D app by selecting **My ReSound**, then **Hearing aid software updates**.

### New users of the ReSound Smart 3D app

-  1 Open the app and select 'Get Started'.
-  2 Review and agree to the Terms and Conditions.
-  3 Enable location services.
-  4 Enable Bluetooth.
-  5 Turn hearing aid 'OFF' and 'ON'.
-  6 The app will identify your hearing aid.
-  7 Restart your hearing aid (if rechargeable press button for 5 seconds).
-  8 Tap 'Continue'. Your hearing aid is now paired and ready to stream.

### Existing users of the ReSound Smart 3D app v. 1.8.0

If you are already using ReSound Smart 3D v. 1.8.0 with a paired Android device when your phone manufacturer enables the Audio Streaming for Hearing Aids (ASHA) functionality, follow these steps.

-  1 Swipe down from the top on the screen to open the Settings menu, then hold the Bluetooth icon for 2 seconds.
-  2 Hold the settings icon for 'ASHA's Hearing Aids' for 2 seconds.
-  3 Select 'Forget'.
-  4 Open the 'More' menu and select 'Pair new hearing aids', then go to step 5 in the instructions above for New users of the ReSound Smart 3D app.

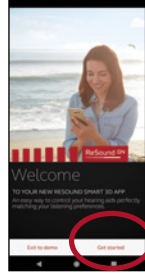

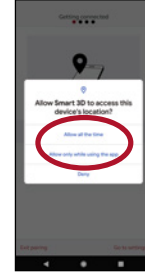
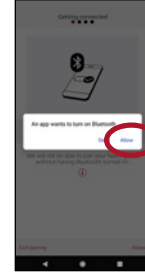
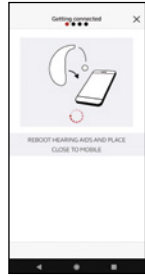
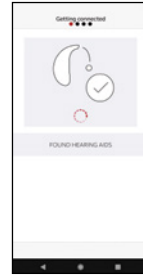
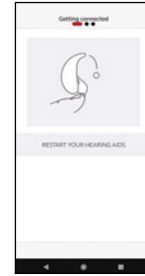
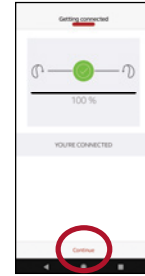
## Smart bimodal pairing with an Android™ device for Nucleus® 7

You can stream sound simultaneously to your Nucleus® 7 Sound Processor and compatible ReSound hearing aid\*\* from a compatible Android™ device\*. Each hearing device should be individually paired for Android streaming.

### ReSound hearing aid

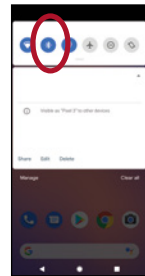
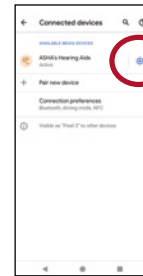
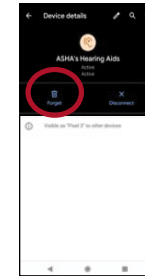

To pair with a compatible Android device you will need the ReSound Smart 3D™ app version 1.8.0 or higher and ReSound firmware version 10042.4200 or later. You can find your firmware version in the Smart 3D app by selecting **My ReSound**, then **Hearing aid software updates**.

### New users of the ReSound Smart 3D app

-  1 Open the app and select 'Get Started'.
-  2 Review and agree to the Terms and Conditions.
-  3 Enable location services.
-  4 Enable Bluetooth.
-  5 Turn hearing aid 'OFF' and 'ON'.
-  6 The app will identify your hearing aid.
-  7 Restart your hearing aid (if rechargeable press button for 5 seconds).
-  8 Tap 'Continue'. Your hearing aid is now paired and ready to stream.

### Existing users of the ReSound Smart 3D app v. 1.8.0

If you are already using ReSound Smart 3D v. 1.8.0 with a paired Android device when your phone manufacturer enables the Audio Streaming for Hearing Aids (ASHA) functionality, follow these steps.

-  1 Swipe down from the top on the screen to open the Settings menu, then hold the Bluetooth icon for 2 seconds.
-  2 Hold the settings icon for 'ASHA's Hearing Aids' for 2 seconds.
-  3 Select 'Forget'.
-  4 Open the 'More' menu and select 'Pair new hearing aids', then go to step 5 in the instructions above for New users of the ReSound Smart 3D app.

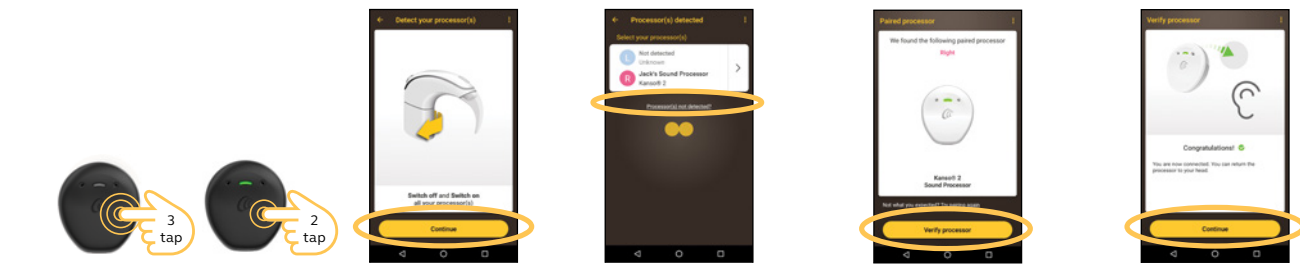
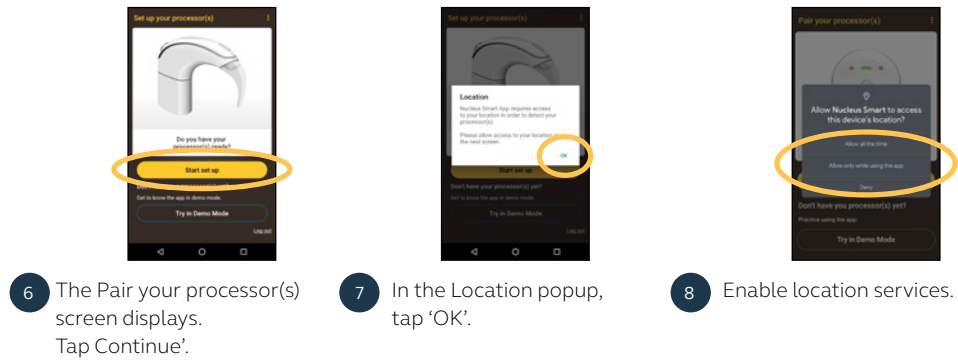
\* For compatibility information and devices visit [www.Cochlear.com/compatibility](http://www.Cochlear.com/compatibility) and [resound.com/compatibility](http://resound.com/compatibility)  
 \*\* For a list of compatible ReSound hearing aids visit [www.Cochlear.com/nucleus/compatibility](http://www.Cochlear.com/nucleus/compatibility)

## Kanso 2 Sound Processor

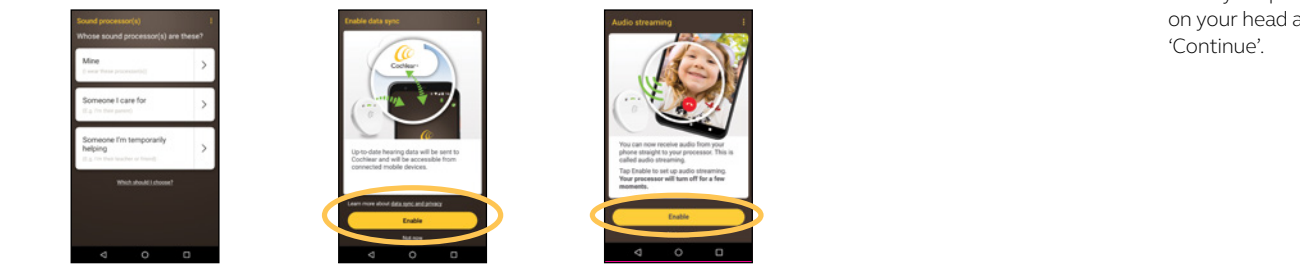
To pair with a compatible Android device\* you will need to use the Nucleus Smart App.

**Note:** When trying to pair or connect your sound processor with the app, you may experience interference from some devices (e.g. microwave ovens, wireless routers or TV streamers). If this happens, move away from the device and try again.

- 1 Have your processor ready.
- 2 Switch on Bluetooth on your Android smartphone.
- 3 Run Nucleus Smart App.
- 4 Swipe through the Welcome screens.
- 5 Create your Cochlear account or login if you have an account.



- 9 The Detect your processor(s) screen displays.
  - Triple tap your processor to turn it off. You will see an amber light for 4 seconds,
  - Double tap your processor to turn it on.
- 10 When your processor displays, tap once to start pairing. Note that your paired hearing aid may not display on this screen.
- 11 The Paired processor screen displays when pairing is complete. Tap 'Continue'.
- 12 When the Verify processor screens display:
  - A. Remove and then double tap your processor to turn it on.
  - B. Place your processor on your head and tap 'Continue'.



- 13 Tap an option in the Sound Processor(s) screen and if prompted, enter user details.
- 14 The Enable data sync screen displays. If you would like to use this feature, tap 'Enable'.
- 15 When the Audio streaming screen displays, tap 'Enable'. Your sound processor will turn off for a few moments.
- 16 If other sound processor(s) are already paired or streaming to your smartphone you need to 'Forget' them now. Follow the screen prompts to 'Forget' the processor(s), then tap the back button to return to the Nucleus Smart App.



- 17 Wait while the Connecting to processor screen displays.
- 18 If you have Touch sounds enabled on your smartphone, the Touch sounds screen displays. Follow the screen prompts to disable Touch sounds, then tap the back button to return to the Nucleus Smart App.
- 19 When the Setup complete! screen displays, tap 'Continue'.

### Notes:

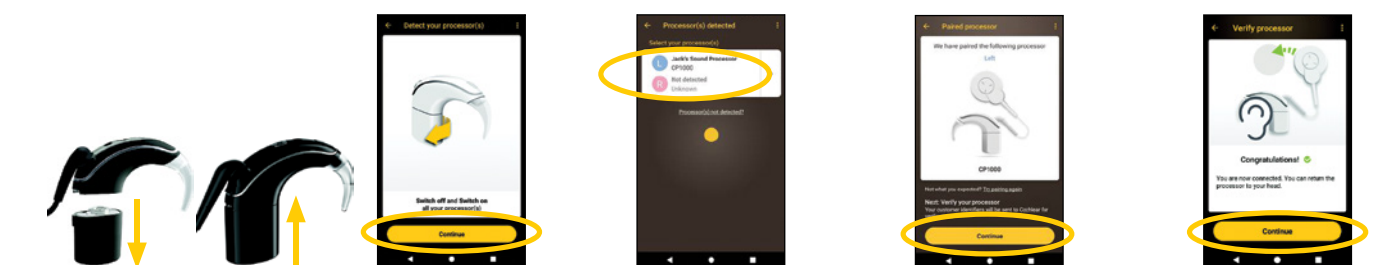
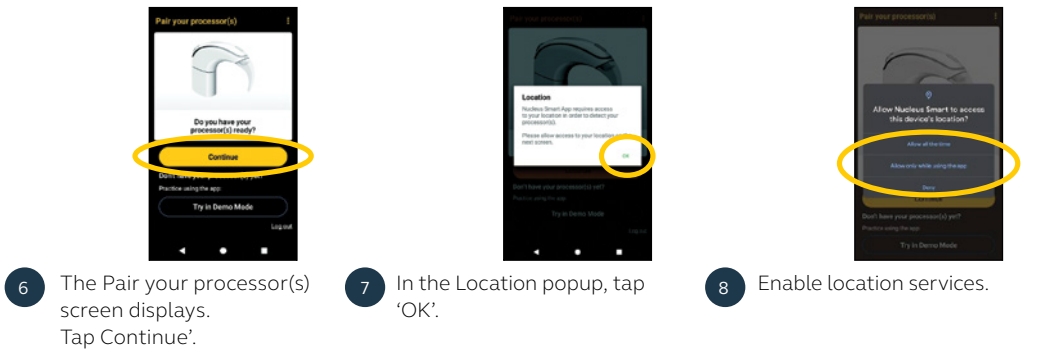
- To pair additional compatible devices, you must first disable Bluetooth on existing paired devices.
- For more information, see the Nucleus Smart App User Guide and the Kanso 2 Sound Processor User Guide.

## Nucleus 7 Sound Processor

To pair with a compatible Android device\* you will need to use the Nucleus Smart App.

**Note:** When trying to pair or connect your sound processor with the app, you may experience interference from some devices (e.g. microwave ovens, wireless routers or TV streamers). If this happens, move away from the device and try again.

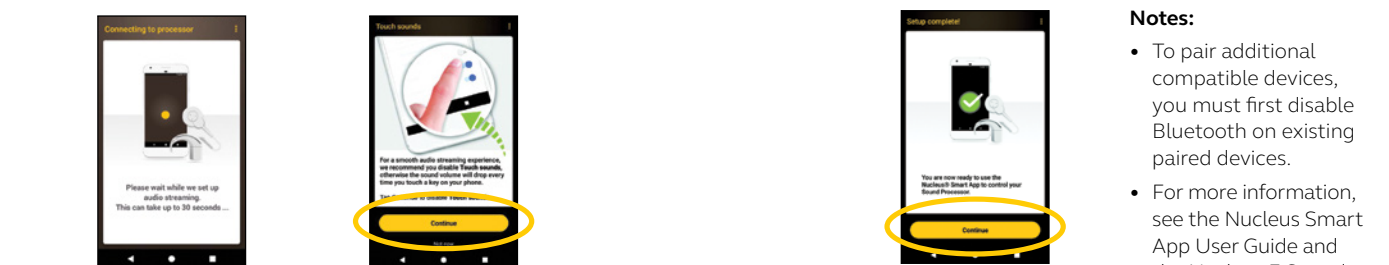
- 1 Have your processor ready.
- 2 Switch on Bluetooth on your Android smartphone.
- 3 Run Nucleus Smart App.
- 4 Swipe through the Welcome screens.
- 5 Create your Cochlear account or login if you have an account.



- 9 The Detect your processor(s) screen displays. Turn your processor 'OFF', then 'ON'. Tap 'Continue'.
- 10 When your processor displays, tap once to start pairing. Note that your paired hearing aid may not display on this screen.
- 11 The Paired processor screen displays when pairing is complete. Tap 'Continue'.
- 12 When the Verify processor screens display:
  - A. Remove your processor and press the processor button
  - B. Place your processor on your head and tap 'Continue'.



- 13 Tap an option in the Sound Processor(s) screen and if prompted, enter user details.
- 14 The Enable data sync screen displays. If you would like to use this feature, tap 'Enable'.
- 15 When the Audio streaming screen displays, tap 'Enable'. Your sound processor will turn off for a few moments.
- 16 If other sound processor(s) are already paired or streaming to your smartphone you need to 'Forget' them now. Follow the screen prompts to 'Forget' the processor(s), then tap the back button to return to the Nucleus Smart App.



- 17 Wait while the Connecting to processor screen displays.
- 18 If you have Touch sounds enabled on your smartphone, the Touch sounds screen displays. Follow the screen prompts to disable Touch sounds, then tap the back button to return to the Nucleus Smart App.
- 19 When the Setup complete, screen displays, tap 'Continue'.


### Notes:

- To pair additional compatible devices, you must first disable Bluetooth on existing paired devices.
- For more information, see the Nucleus Smart App User Guide and the Nucleus 7 Sound Processor User Guide.

## Bimodal pairing with wireless accessories and the Nucleus 7 Sound Processor

You can stream to your Nucleus 7 Sound Processor and ReSound hearing aid from a ReSound Multi Mic, Cochlear™ Mini Microphone 2/2+, ReSound TV Streamer 2 or Cochlear TV Streamer.

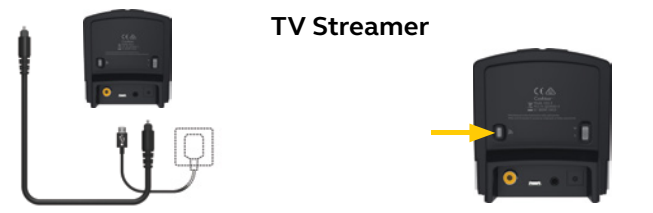
**Microphone**



**2** Turn on microphone.  
**Note:** Ensure microphone is charged.

**3** Press the pairing button once for channel 1, twice for channel 2, three times for channel 3.  
**Note:** The LED will blink orange for 20 seconds while device is in pairing mode.

**TV Streamer**




**2** Plug power and audio cables into TV streamer and connect to audio source. Turn on TV streamer.

**3** Press pairing button.  
**Note:** The LED will blink orange for 20 seconds while device is in pairing mode.

or

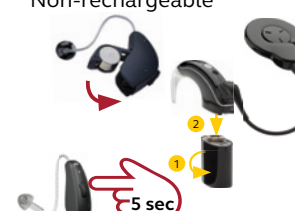
**Non-rechargeable**



**1** Turn off ReSound hearing aid and Nucleus 7 Sound Processor.

**4** Turn on your hearing aid and then turn on your sound processor.  
**Note:** The LED will flash blue to show pairing was successful.

**Rechargeable**



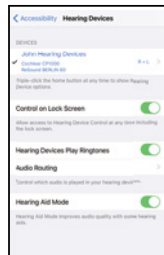
**1** Turn off ReSound hearing aid and Nucleus 7 Sound Processor.

**4** Turn on your hearing aid and then turn on your sound processor.  
**Note:** The LED will flash blue to show pairing was successful.

## Control streaming to your sound processor and hearing aid from a wireless accessory

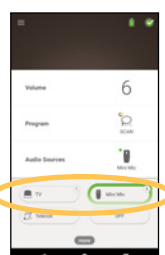
**Note:** Streaming must be started and stopped on each device individually.

**Both devices**




Streaming to both ears  
Through Apple's accessibility menu you can control streaming to both the sound processor and hearing aid. Triple click the home button to access controls for turning on a streaming source and to adjust volume.#

**Nucleus 7 Sound Processor**




Nucleus Smart App  
Under 'Audio Sources' select the wireless accessory you are streaming from.

**2 sec**




Press and hold the button on your sound processor for 2 seconds, then release the button.

**ReSound hearing aid**



ReSound hearing aid  
Press and hold the push button on your ReSound hearing aid.

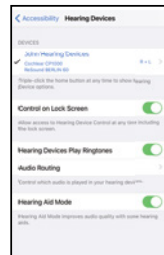
**3 sec**



ReSound Remote Control 2 (optional)  
Press the streaming button on this remote control.

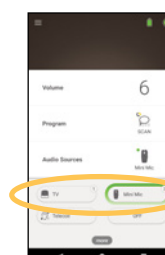
or

**Both devices**




Streaming to both ears  
Through Apple's accessibility menu you can control streaming to both the sound processor and hearing aid. Triple click the home button to access controls for turning on a streaming source and to adjust volume.#

**Kanso 2 Sound Processor**




Nucleus Smart App  
Under 'Audio Sources' select the wireless accessory you are streaming from.

**2 sec**




Cochlear CR310 Remote Control (optional)  
Press and hold the Telecoil button for 2 seconds, then release.

**ReSound hearing aid**



ReSound hearing aid  
Press and hold the push button on your ReSound hearing aid.

**3 sec**



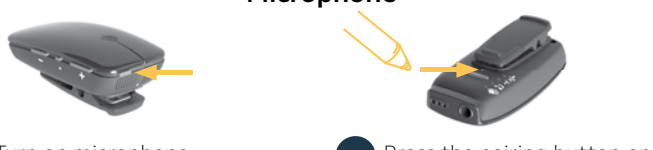
ReSound Remote Control 2 (optional)  
Press the streaming button on this remote control.

## Bimodal pairing with wireless accessories for Kanso® 2 Sound Processor

You can stream to your Kanso® 2 Sound Processor and ReSound hearing aid from a ReSound Multi Mic, Cochlear™ Mini Microphone 2/2+, ReSound TV Streamer 2 or Cochlear TV Streamer.

### Pairing your sound processor and hearing aid with a wireless accessory

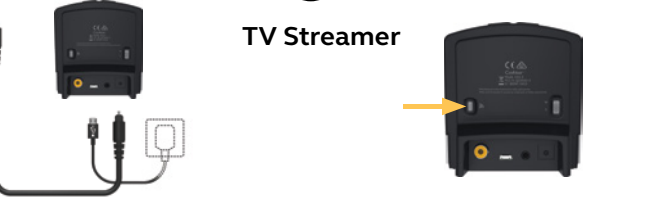
**Microphone**



**2** Turn on microphone.  
**Note:** Ensure microphone is charged.

**3** Press the pairing button once for channel 1, twice for channel 2, three times for channel 3.  
**Note:** The LED will blink orange for 20 seconds while device is in pairing mode.

**TV Streamer**

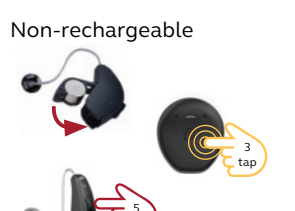


**2** Plug power and audio cables into TV streamer and connect to audio source. Turn on TV streamer.

**3** Press pairing button.  
**Note:** The LED will blink orange for 20 seconds while device is in pairing mode.

or

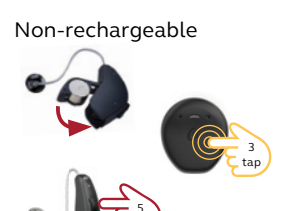
**Non-rechargeable**



**1** Turn off ReSound hearing aid and Kanso 2 Sound Processor.

**4** Turn on your hearing aid and then turn on your sound processor. The LED will flash blue to show pairing was successful. You can now begin streaming to one or both hearing devices.

**Rechargeable**



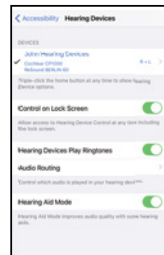
**1** Turn off ReSound hearing aid and Kanso 2 Sound Processor.

**4** Turn on your hearing aid and then turn on your sound processor. The LED will flash blue to show pairing was successful. You can now begin streaming to one or both hearing devices.

## Control streaming to your sound processor and hearing aid from a wireless accessory

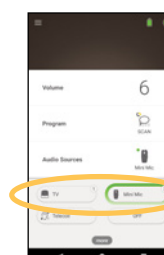
**Note:** Streaming must be started and stopped on each device individually.

**Both devices**




Streaming to both ears  
Through Apple's accessibility menu you can control streaming to both the sound processor and hearing aid. Triple click the home button to access controls for turning on a streaming source and to adjust volume.#

**Kanso 2 Sound Processor**




Nucleus Smart App  
Under 'Audio Sources' select the wireless accessory you are streaming from.

**2 sec**




Cochlear CR310 Remote Control (optional)  
Press and hold the Telecoil button for 2 seconds, then release.

**ReSound hearing aid**



ReSound hearing aid  
Press and hold the push button on your ReSound hearing aid.

**3 sec**



ReSound Remote Control 2 (optional)  
Press the streaming button on this remote control.

# For more information refer to the Apple Accessibility Quick Guide.

# For more information refer to the Apple Accessibility Quick Guide.





**Cochlear and ReSound collaborate in the Smart Hearing Alliance to develop advanced and innovative hearing solutions for you.**



[cochlear.com](http://cochlear.com)

**Cochlear Americas**  
10350 Park Meadows Drive, Lone Tree, CO 80124 USA  
Telephone: 1 303 790 9010 Support: 1 800 483 3123

**Cochlear Canada Inc**  
2500-120 Adelaide Street West Toronto, ON M5H 1T1 Canada  
Support: 1 800 483 3123

**Hear now. And always**



[resound.com](http://resound.com)

**Manufacturer according to FDA: ReSound North America**  
8001 East Bloomington Freeway, Bloomington, MN 55420 USA  
Telephone: 1 800 248 4327

**Manufacturer according to Health Canada: ReSound Canada**  
2 East Beaver Creek Road, Building 3, Richmond Hill, ON L4B 2N3 Canada  
Telephone: 1 888 737 6863

**GN Making Life Sound Better**

**ReSound is part of the GN group. GN makes life sound better through intelligent audio solutions.**

Please seek advice from your health professional about treatments for hearing loss. Outcomes may vary, and your health professional will advise you about the factors which could affect your outcome. Always read the instructions for use. Not all products are available in all countries.

The Cochlear Nucleus 7 and Kanso 2 Sound Processors are compatible with iPhone, iPad and iPod touch. The Cochlear Nucleus Smart App is available on App Store and Google Play. For compatibility information visit [www.cochlear.com/compatibility](http://www.cochlear.com/compatibility).

Cochlear, Hear now. And always, Nucleus, Kanso, the elliptical logo and True Wireless are either trademarks or registered trademarks of Cochlear Limited. ReSound is a trademark of GN Hearing A/S.

Selected ReSound hearing aids are compatible with iPhone, iPad and iPod touch. The ReSound Smart app and ReSound Smart 3D app are available on App Store and Google Play. For compatibility information visit [www.resound.com/compatibility](http://www.resound.com/compatibility).

Android, Google Play and the Google Play logo are trademarks of Google LLC.

Apple, the Apple logo, FaceTime, Made for iPad logo, Made for iPhone logo, Made for iPod logo, iPhone, iPad Pro, iPad Air, iPad mini, iPad and iPod touch are trademarks of Apple Inc., registered in the U.S. and other countries. App Store is a service mark of Apple Inc., registered in the U.S. and other countries.

The Bluetooth® word mark and logos are registered trademarks owned by Bluetooth SIG, Inc., and any use of such marks by Cochlear Limited is under license.

© Cochlear Limited 2020.



FUN2984 ISS5 OCT20