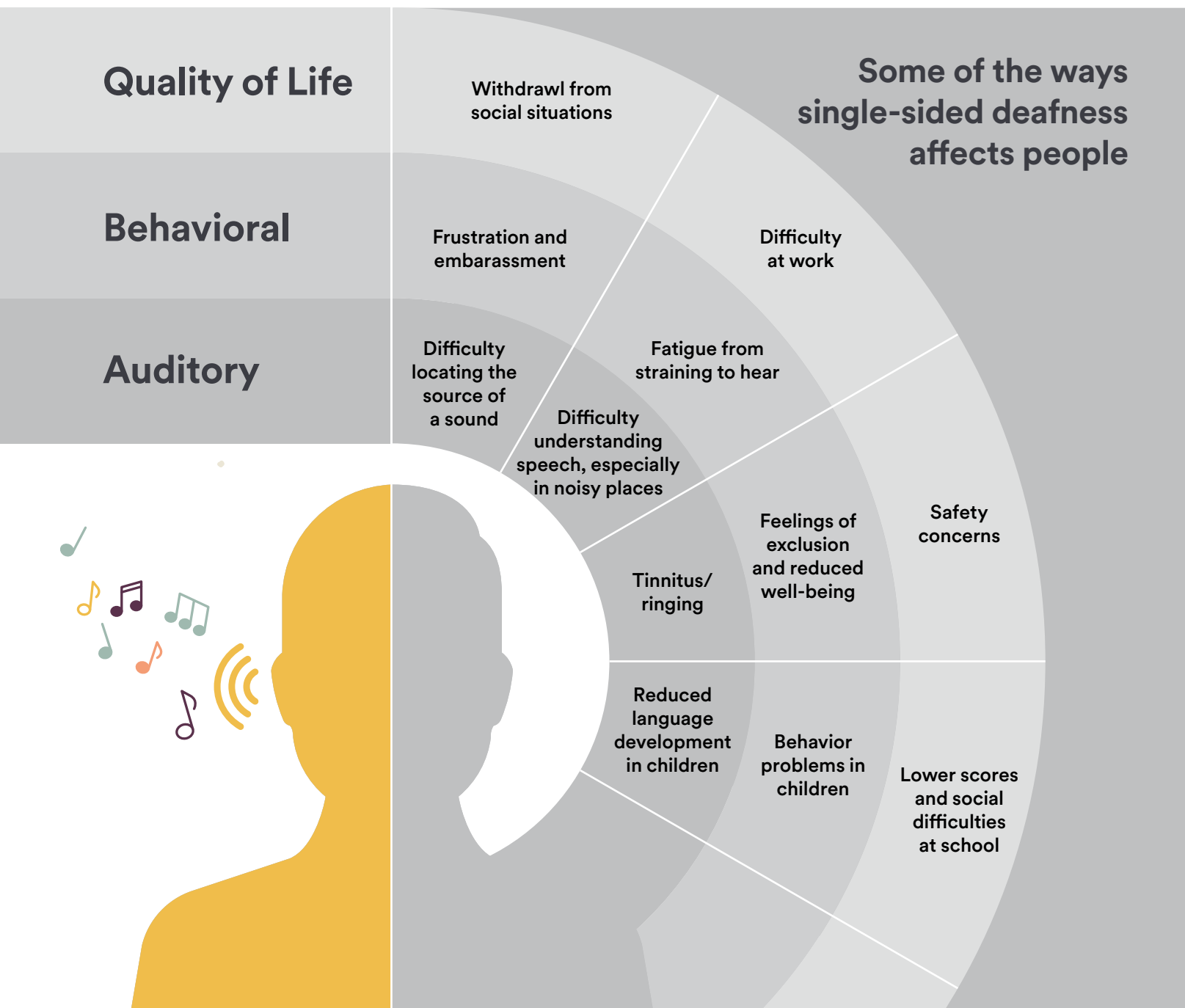


## What will treating your single-sided deafness give back to you?

Single-sided deafness and unilateral hearing loss can be sudden or can happen over time. When it does, it can impact your day-to-day life on many levels. Although you may find different ways to cope, treating your hearing loss can help restore not only your hearing, but also your quality of life.

Around the world, hundreds of thousands of people are benefitting from Cochlear hearing solutions. They're connected to sound, and to each other. You could be too.



## Hear now. And always

As the global leader in implantable hearing solutions, Cochlear is dedicated to helping people with moderate to profound hearing loss experience a life full of hearing. We have provided more than 600,000 implantable devices, helping people of all ages to hear and connect with life's opportunities.

We aim to give people the best lifelong hearing experience and access to innovative future technologies. We collaborate with leading clinical, research and support networks.

That's why more people choose Cochlear than any other hearing implant company.

### References:

- Lin LM, Bowditch S, Anderson MJ, May B, Cox KM, Niparko K. "Amplification in the rehabilitation of unilateral deafness: speech in noise and directional hearing effects with bone-anchored hearing and contralateral routing of signal amplification." *Otology & Neurotology*. 2006;27(2):172-82.
- Hol MK, Snik AF, Mylanus EA, Cremers CW. Long-term results of bone anchored hearing aid recipients who had previously used air-conduction hearing aids. *Arch Otolaryngol Head Neck Surg* 2005 Apr;131(4):321-5.
- Snik AF, Mylanus EA, Proops DW, Wolfaardt J, Hodgetts WA, Somers T, Niparko JK, Wazen JJ, Sterkers O, Cremers CW, Tjellström A. Consensus statements on the Baha system: Where do we stand at present? *Ann Otol Rhinol Laryngol* 2005 Dec;114(12) Suppl 195:1-12.
- Kompis M, Wilhem W, Caversaccio. Long term benefit of bone anchored hearing systems in single sided deafness. *Acta Oto-Laryngologica*. 2017; 13:398-402.
- Maurizio B, Biagini M, Lazzarino AI, Monini S, Hearing and quality of life in a south European Baha population. *Acta Oto-Laryngologica*. 2010 130: 1040-1047.
- Fyrlund, H. (2019). Osia performance [Powerpoint Slide 4]. Data on file.
- Data collected using an investigational system.
- Hol MKS, Bosman AJ, Snik AFM, Mylanus EAM, Cremers CWRJ. "Bone anchored hearing aids in unilateral inner ear deafness: an evaluation of audiometric and patient outcome measurements." *Otol Neurotol* (2005;26 ): 999-1006.
- Arndt S, Aschendorff A, Laszig R, Beck R, Schild C, Kroeger S, Ihorst G, Wesarg T: Comparison of pseudo binaural hearing to real binaural hearing rehabilitation after cochlear implantation in patients with unilateral deafness and tinnitus. *Otol Neurotol* 2011a;32: 39-47.
- Firszt JB, Reeder RM, Holden LK, Dwyer NY, Asymmetric Hearing Study T. Results in adult cochlear implant recipients with varied asymmetric hearing: a prospective longitudinal study of speech recognition, localization, and participant report. *Ear Hear* 2018; 39:845-862
- Alhanbali, S., Dawes, P., Lloyd, S., & Munro, K. J. (2017). Self-Reported Listening-Related Effort and Fatigue in Hearing-Impaired Adults. *Ear and Hearing*, 38(1), e39-e48. <https://doi.org/10.1097/AUD.0000000000000361>
- Wie, O. B., Pripp, A. H., & Tveté, O. (2010). Unilateral deafness in adults: Effects on communication and social interaction. *Annals of Otology, Rhinology and Laryngology*, 119(11), 772-781.
- Vermeire K, Van de Heyning P. Binaural hearing after cochlear implantation in subjects with unilateral sensorineural deafness and tinnitus. *Audiol Neurootol* 2009;14:163-171.
- Lieu JE, Tye-Murray N, Karzon RK, Piccirillo JF. Unilateral hearing loss is associated with worse speech-language scores in children. *Pediatrics* 2010;125:e1348-e1355.
- Sangen, A., Dierckx, A., Boudewyns, A., Dhooge, I., Offeciers, E., Wouters, J., Desloovere, C., & van Wieringen, A. (2019). Longitudinal linguistic outcomes of toddlers with congenital single-sided deafness—Six with and twelve without cochlear implant and nineteen normal hearing peers. *Clinical Otolaryngology*, 44(4), 671-676. <https://doi.org/10.1111/coa.13347>
- Lieu, J. E. C. (2018). Permanent Unilateral Hearing Loss (UHL) and Childhood Development. *Current Otorhinolaryngology Reports*, 6(1), 74-81. <https://doi.org/10.1007/s40136-018-0185-5>
- Hornsby BW, Werfel K, Camarata S, Bess FH. Subjective fatigue in children with hearing loss: some preliminary findings. *Am J Audiol* 2014;23: 129-134

Please seek advice from your health professional about treatments for hearing loss. Outcomes may vary, and your health professional will advise you about the factors which could affect your outcome. Always read the instructions for use. Not all products are available in all countries. Please contact your local Cochlear representative for product information.

©Cochlear Limited 2022. All rights reserved. Cochlear, Hear now. And always, Nucleus, Kanso, Baha, Osia, the elliptical logo, and marks bearing an ® or ™ symbol, are either trademarks or registered trademarks of the Cochlear group of companies (unless otherwise noted).

**Cochlear Americas**  
10350 Park Meadows Drive  
Lone Tree, CO 80124 USA  
Telephone: 303 790 9010  
Support: 800 483 3123

**Cochlear Canada Inc.**  
2500-120 Adelaide Street West  
Toronto, ON M5H 1T1 Canada  
Support: 800 483 3123

[www.cochlear.com/us](http://www.cochlear.com/us)

FUN4610 ISS1 APR22

Follow us on



## Exploring proven hearing solutions for single-sided deafness

# Hear more from the world ALL around you

There's no joy like fully connecting to the world around you. Whether a bone conduction or cochlear implant is right for you, our implantable solutions for treating single-sided deafness take every detail into account to help you hear it all.

## Implantable solutions



Cochlear™ Osia® System



Cochlear™ Nucleus® System

## Non-surgical solutions



Cochlear™ Baha® Start with Softband or SoundArc



CROS/BiCROS Hearing Aids

## Let's talk about when to consider an implantable solution

	Poor ear	Good ear	Age
<b>Nucleus® System</b> Pure Tone Average (air conduction) measured at 500, 1000, 2000, 4000 Hz	greater than or equal to <b>80</b> dB	less than or equal to <b>30</b> dB	5 years and older
<b>Osia® System</b> Pure Tone Average (air conduction) measured at 500, 1000, 2000, 3000 Hz	greater than or equal to <b>80</b> dB	less than or equal to <b>20</b> dB	12 years and older

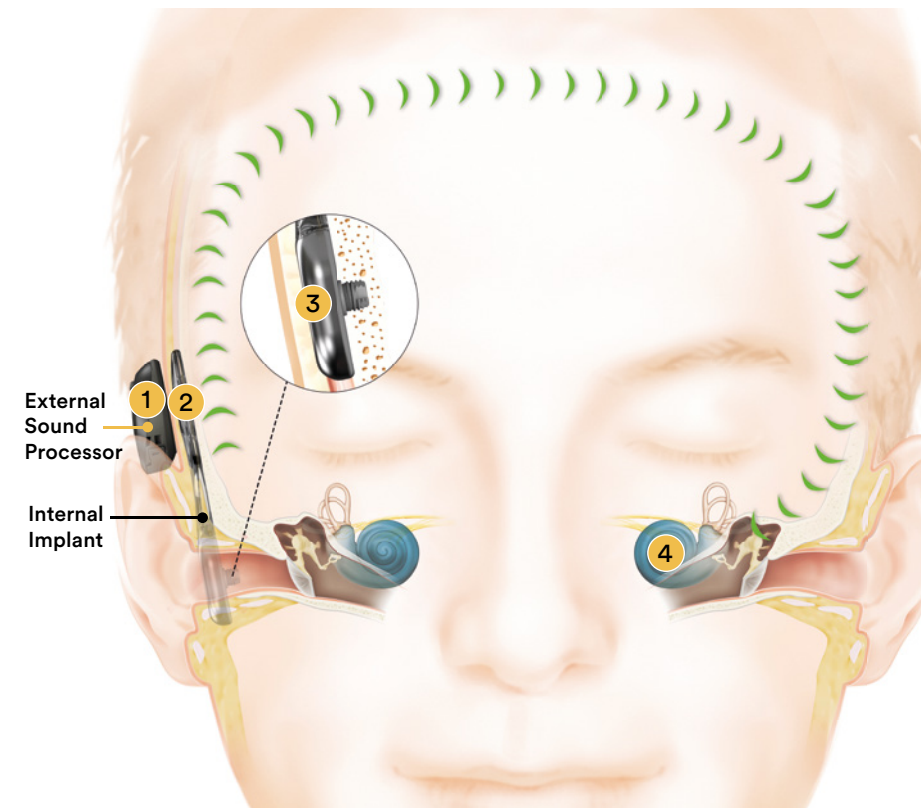
Treatment option for single-sided deafness

## Bone conduction implant with the Cochlear™ Osia® System

The Osia® System sends sounds to your normal hearing ear to help enhance hearing

### How the Osia System works for single-sided deafness

- 1 Microphones on the sound processor pick up sounds and the processor converts them into a digital signal.
- 2 This signal is transferred to the implant just under the skin.
- 3 The Piezo Power™ transducer vibrates, sending vibrations through the implant to the bone.
- 4 The vibrations travel around the head to the hearing inner ear where they are converted into electrical impulses and sent to the brain to be interpreted as sound.



### Potential benefits

- Improved speech understanding in noise<sup>1,2</sup>
- Improved speech understanding in quiet<sup>1-4</sup>
- Improved quality of life<sup>5</sup>
- Better transmission of high frequency sounds compared with other bone conduction implant systems<sup>6-7</sup>
- Proven transmission of natural sound<sup>8</sup>

### Osia Sound Processor

The slim off-the-ear Osia 2 Sound Processor is discreet, light and comfortable to wear.



Cochlear Osia 2 Sound Processor

\* Pure Tone Average measured at 500, 1000, 2000, and 3000 Hz

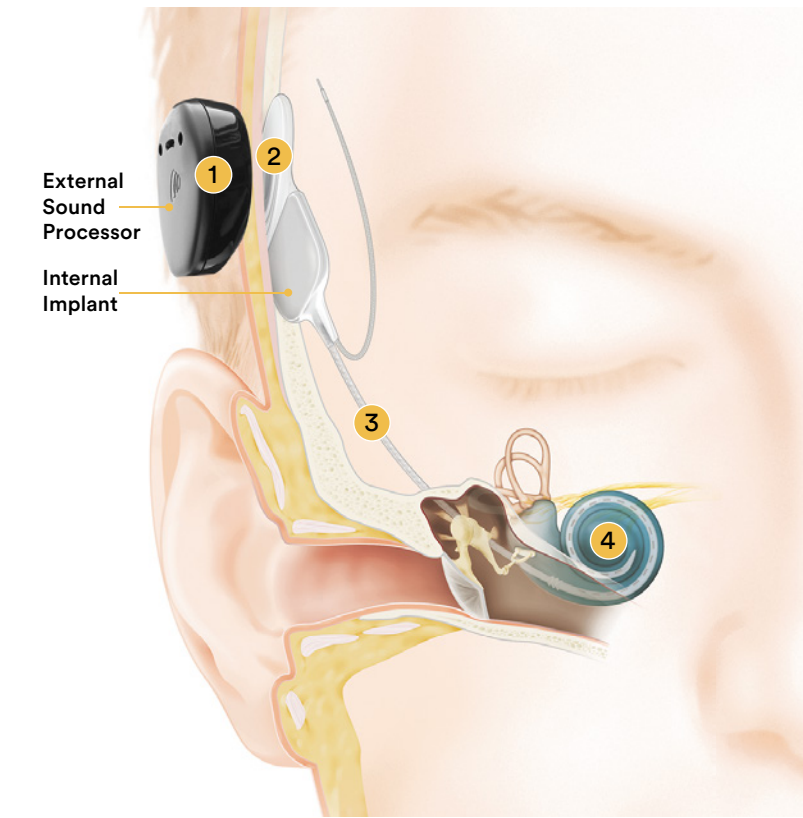
Treatment option for single-sided deafness

## Cochlear implant with the Cochlear™ Nucleus® System

A cochlear implant helps restore hearing to your deaf ear

### How the Nucleus System works

- 1 Microphones on the sound processor pick up sounds and the processor converts them into a digital signal.
- 2 This signal is transferred to the implant just under the skin.
- 3 The implant sends the digital sound signal to the electrode array in the cochlea.
- 4 The hearing nerve picks up the signal and sends it to the brain, which is understood as sound.



### Potential benefits<sup>9-17</sup>

- Improved speech understanding in noise
- Improved speech understanding in quiet
- Improved quality of life
- Reduced listening effort
- Improved Localization

### Nucleus Sound Processors

The Nucleus System provides small, simple and smart solutions designed to maximize hearing performance.



Cochlear Kanso 2 Sound Processor



Cochlear Nucleus 7 Sound Processor