



Cochlear®

Hear now. And always

Cochlear™ Osia® System

You've never heard
anything like it



Discover a new way of hearing

The human body is amazing. Our ability to see, hear, smell, touch and taste makes life richer in many ways. But sometimes your body doesn't work as expected, which can make you feel like you're missing out on important moments.

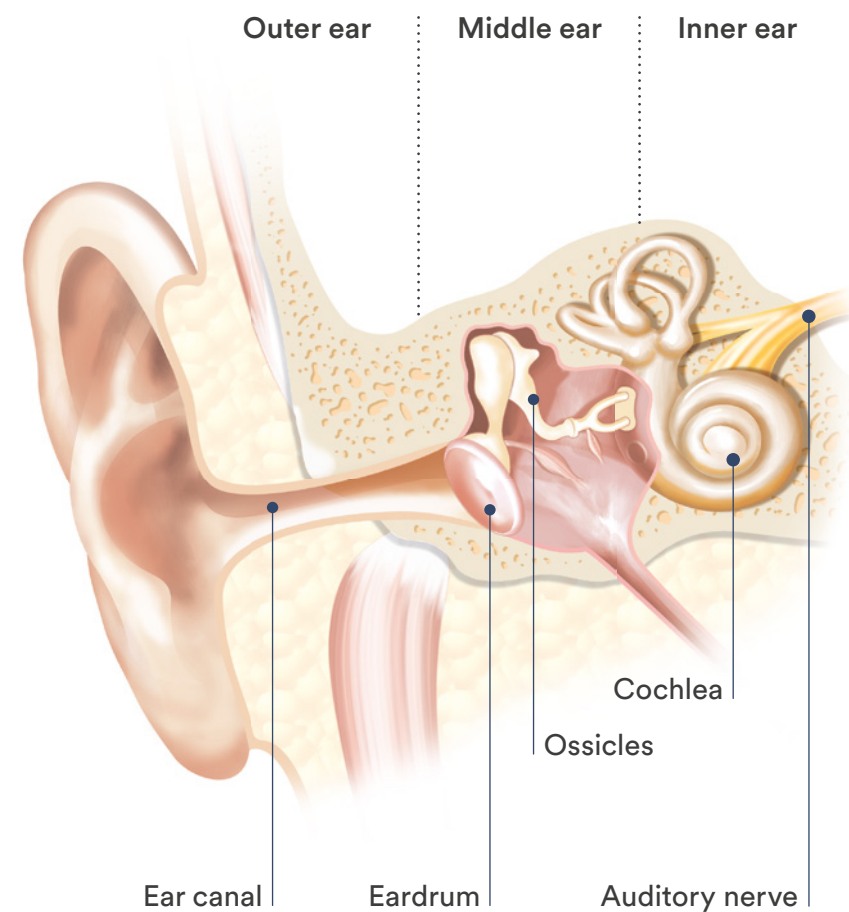
Millions of people around the globe live with hearing loss, struggling daily to pick up on the sounds around them and communicate with the people in their lives. If you have hearing difficulties, you're not alone, and there is something you can do about it.

Every hearing journey is different, and whether you've already tried hearing aids, middle-ear surgery, or if you're looking for your first hearing solution, the Cochlear™ Osia® System may be what you're looking for.

The Osia System uses a natural process called bone conduction to help you experience the sounds around you, but it works in a unique way compared to other solutions available. It's innovative technology is designed to work in and with the body, so you can get the most out of hearing every day.

Understanding your hearing loss

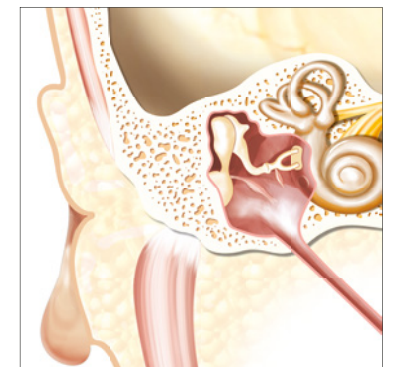
Hearing helps enrich our experiences and interactions in the world, from talking to loved ones to listening to the sounds of nature. Understanding your hearing loss is the first step to finding a hearing solution that is right for you.



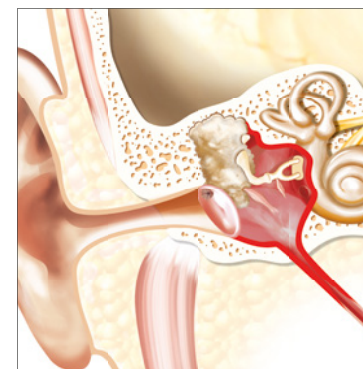
Hearing is the process of sound traveling through our outer-, middle- and inner ear to the hearing nerve and then to the brain, which interprets what we hear. Our natural hearing depends on the different parts in our ear working together with our brain, and if one of them is not working correctly, you may experience hearing loss. Hearing loss can affect one or both ears, and generally, we can divide the type of hearing loss into the following categories:

- **Conductive hearing loss** occurs when sound traveling from the outer or middle ear is blocked from reaching the inner ear (cochlea).
- **Sensorineural hearing loss** can occur in one or both ears. If one ear is affected with profound hearing loss while the other ear has normal hearing, it is known as single-sided sensorineural deafness (SSD).
- **Mixed hearing loss** refers to a combination of conductive and sensorineural hearing loss.

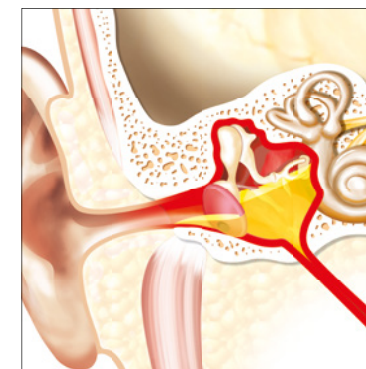
Bone conduction hearing is indicated for and can benefit people with conductive hearing loss, mixed hearing loss and SSD. Common conditions that can cause these types of hearing loss include:



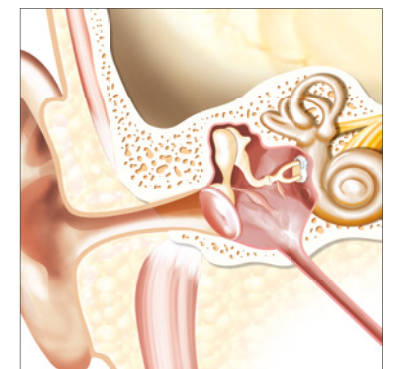
Atresia and/or microtia



Cholesteatoma



Chronic otitis media



Otosclerosis

How bone conduction connects you to sound

Treatments for hearing loss need to be both effective and work in harmony with your everyday life. There are different treatment options that work and help you in different ways, and maybe you've already tried one. Bone conduction works differently.

Hearing aids may help some people but others might find them uncomfortable, and you may have experienced repeat ear infections, eczema, or itchiness with them. Or they may no longer help you.

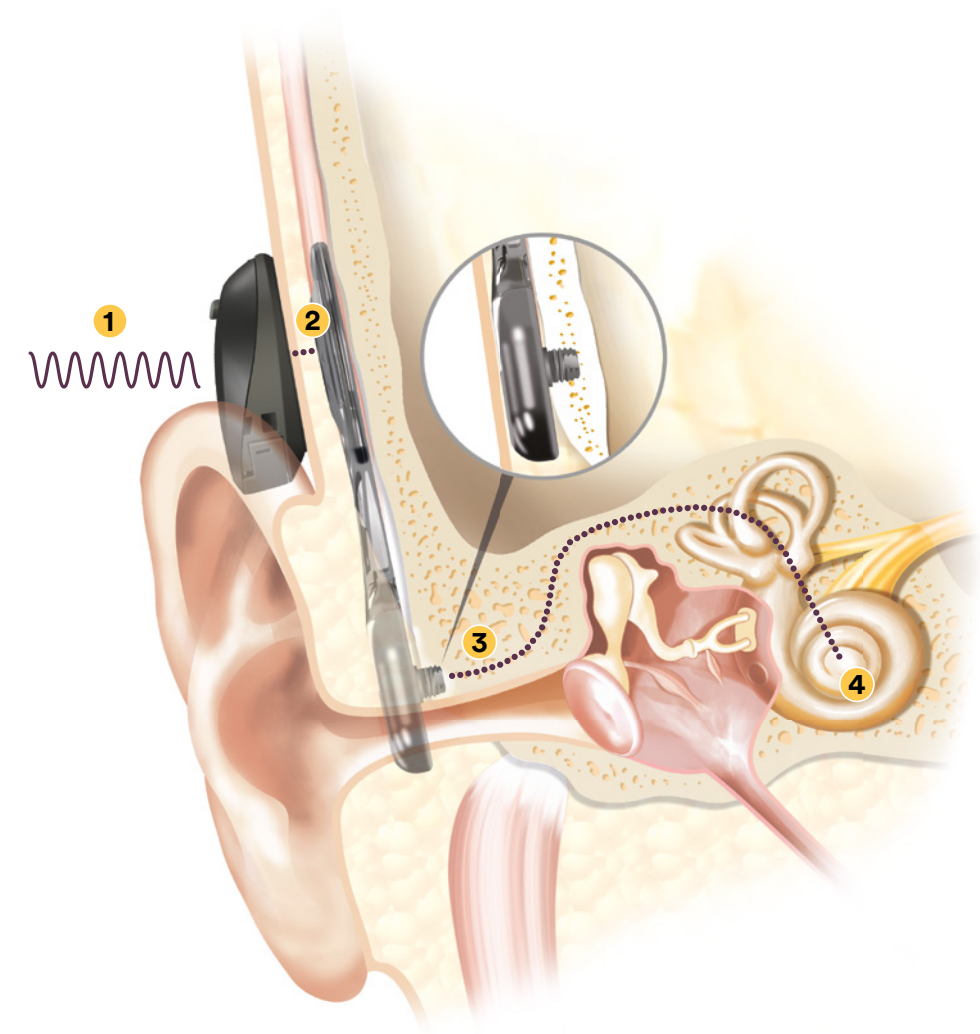
Reconstructive surgeries are sometimes necessary to treat infections and other problems but may still leave you with hearing loss. Clinical evidence shows that, with Chronic Otitis Media for example, hearing loss requiring further treatment remains in 30% of cases, and repeat surgeries are common.¹

A bone conduction system bypasses blocked parts of the outer or middle ear and sends vibrations directly to your inner ear.

Unlike hearing aids, a bone conduction system uses a small sound processor placed off the ear, leaving the ear canal free. This may alleviate some side effects or difficulties that wearing hearing aids can cause, such as an increased risk for ear infections.

The Cochlear Osia System uses the principle of bone conduction to send sound through the bone to your inner ear.

It's made up of two key parts, each with technologies designed to help you hear and communicate: the Osia 2(I) Sound Processor and the active OSI300 Implant that is attached to the bone with the small BI300 Implant.



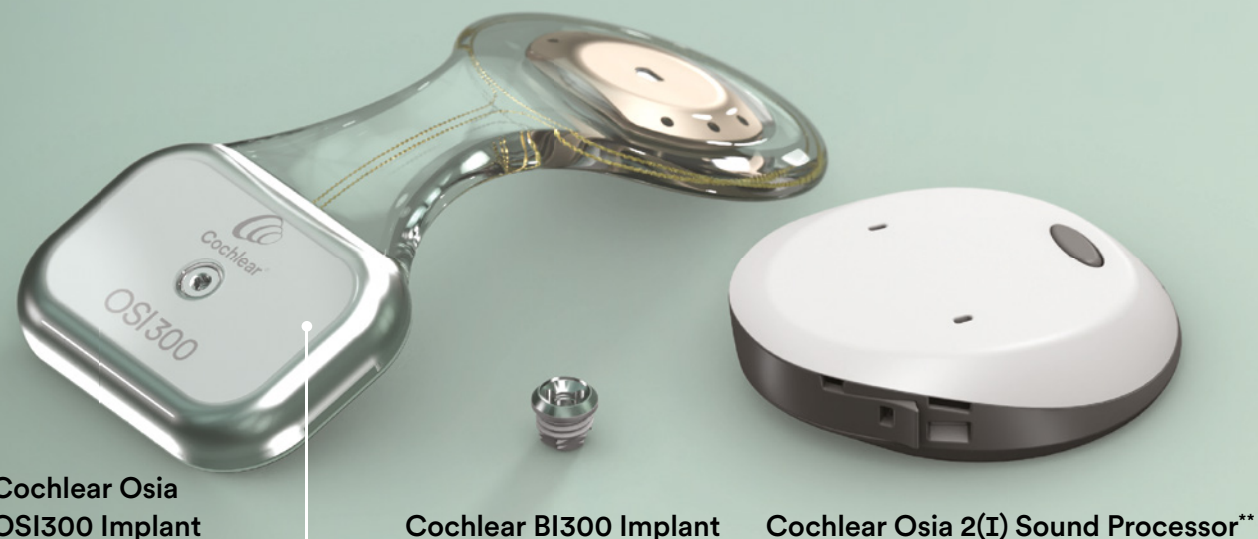
- 1 The discreet sound processor sits just off the ear where it captures sound in the air and analyzes the signal.
- 2 The processed sound signal moves through the skin to the OSI300 Implant. The implant sits fully under the skin.
- 3 A transducer in the implant generates sound vibrations, which cannot be felt, and sends them through the implant to the bone.
- 4 The vibrations travel to the inner ear where they are converted into electrical impulses as part of the natural hearing process and sent to the brain to be interpreted as sound.

“Wearing the Osia is way more comfortable than hearing aids. You just put on the sound processor and forget about it. That’s it, you’re done for the day. It’s great.”

Robyn, Osia System recipient

A hearing solution designed to work for you

The Osia System is different from traditional bone conduction implant systems, in which the sound vibrations are created in the sound processor. The Osia System is an **active bone conduction implant** system which means that these vibrations are created in the implant. Inside the implant, a piezoelectric (Piezo Power™) transducer converts the signal to vibrations and sends them through the implant to the bone. It is also the first and only active bone conduction system enabling MRI at 3.0 T without the need of magnet removal or head wrap.*



Cochlear Osia
OSI300 Implant

Cochlear BI300 Implant

Cochlear Osia 2(I) Sound Processor**

Piezo Power™ transducer

Because of its unique design, the Osia System's Piezo Power transducer is able to deliver high power especially in the high frequencies, which is important for understanding speech in noisy listening environments.²

* Cochlear Osia implants are MR Conditional, meaning they have demonstrated safety in the Magnetic Resonance Imaging (MRI) environment within defined conditions. Always read the instructions for use and discuss with your doctor before undertaking any MRI procedure.

** The Osia 2(I) Sound Processor is only compatible with the OSI300 Implant and have the same performance and connectivity as the Osia 2 Sound Processor (SmartSound IQ, Made for iPhone, connection to Cochlear True Wireless™ devices and Osia Smart App). The difference between the current system and the new system is the MRI access. In the United States and Canada, the Osia System is cleared for children ages five and older.





More power, better hearing

A natural hearing experience

Packed full of power, the Osia System can give you access to a broad and dynamic range of sounds. A broad and dynamic range of sounds helps you hear subtle nuances, and a clear contrast between soft and loud sounds makes for a more natural hearing experience.³

Understand speech in noise

The Osia System's unique technologies are optimized to deliver high power and clarity, especially in high-frequency areas important for understanding what people around you are saying. A large dynamic range has been shown in studies to improve people's ability to understand speech in noise.⁴

Helping more people hear longer

The Osia System has a fitting range of up to 55 decibel (dB) hearing loss. That means that it can help people who have higher levels of sensorineural hearing loss.

In a survey, a majority of users said clear sound quality is one of the main benefits they experienced with an Osia System.⁵

Hear what you want to hear, no matter where you are

The Osia System features **SmartSound® iQ technology** that is designed to help you hear better in the different situations you find yourself in during the day. With SmartSound iQ signal processing, your sound processor is able to automatically define the environment you're in and deliver a clear signal to help optimize your hearing experience – whether you find yourself in a meeting at work with lively discussions or you're sitting on the porch, listening to the rain.



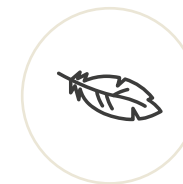
Enhance speech

The sound processor has dual microphones that help you understand and focus on speech in noisy situations.



Reduce noise

The signal processing suite in the sound processor actively works to reduce unwanted noise around you, so you can focus on the important things.



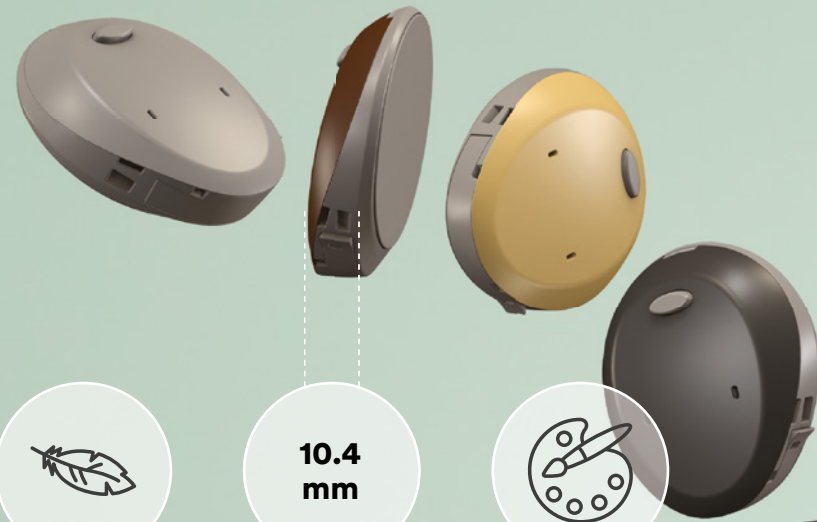
Increase comfort

SmartSound iQ technology actively works to adjust volume based on the sound environment.

SmartSound®
iQ

Easy to use, easy to love

The off-the-ear Osia 2(I) Sound Processor* is comfortable to wear and easy to use. As an all-in-one unit, you simply place it on your head behind the ear, adjust your hair and you are ready to go. There are no small pieces to bother with, and your ear is left open and free. It offers different connectivity options, like direct streaming and wireless device compatibility, so you're able to stay connected with the world around you.



-  Dust and moisture resistant**
-  Only 11.4 grams
-  10.4 mm
Low profile
-  Five interchangeable color covers
-  Aqua+ for water activities**
-  Retention options for active sports
-  Stream music, calls, and more†

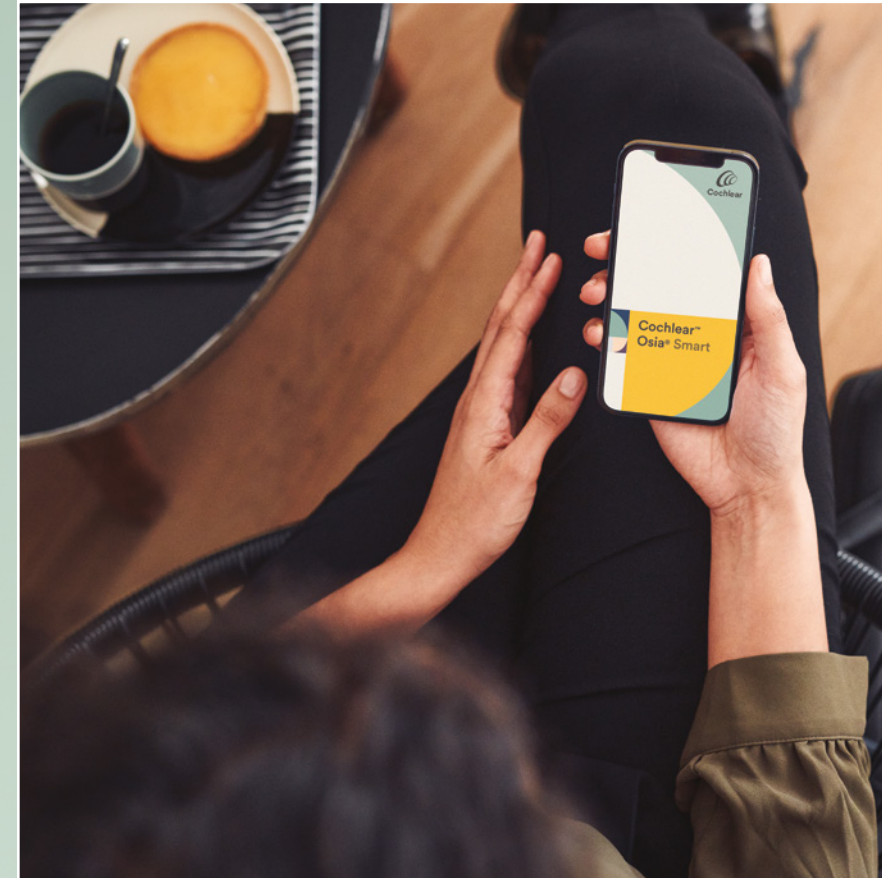
 Actual size 36 mm

Read more about the Osia Sound Processor on www.cochlear.com

* The Osia 2(I) Sound Processor is only compatible with the OSI300 Implant and have the same performance and connectivity± as the Osia 2 Sound Processor (SmartSound IQ, Made for iPhone, connection to Cochlear True Wireless™ devices and Osia Smart App). The difference between the current system and the new system is the MRI access.

** The Cochlear Osia 2 and 2(I) Sound Processors with Aqua plus are dust and water resistant to the level of IP68 of the International Standard IEC60529 when used with LR44 alkaline or nickel metal hydride disposable batteries. This water protection rating means that the sound processor with the Aqua+ can be continuously submerged under water to a depth of up to 3 meters (9 feet and 9 inches) for up to 2 hours. Refer to the relevant User Guide for more information.

† For information regarding the compatibility of Cochlear's Sound Processors with Apple or Android devices, visit www.cochlear.com/compatibility. Cochlear's range of Smart Apps and Support Apps are available on App Store and/or Google Play. For information regarding the sound processors, operating systems and devices that are compatible with the Cochlear's range of Smart Apps and Support Apps, visit www.cochlear.com/compatibility.



Smartphones have become essential tools you use to connect with friends and family. With Made for iPhone technology, the Osia System becomes a simple extension of these devices, streaming sound directly to your sound processor from any compatible Apple® device. For Android™ and other smartphones, you can stream using our Cochlear True Wireless™ Phone Clip.

The Osia Smart App lets you control and adjust your sound processor easily and discreetly from your smartphone or Apple Watch®.† You can tune the sound the way you want to hear it, and even monitor your status and settings.



The Aqua+ accessory is a silicone casing that covers your sound processor to let you get involved in water activities with family and friends. With an Aqua+ accessory, the Osia Sound Processor is water resistant down to almost 10 feet.**



Made to last

When you choose a hearing solution from Cochlear, you make a commitment to us, and we make a commitment to you. You don't only need your hearing device to be effective, you need it to be reliable.

Demonstrated reliability

The Osia Implant has demonstrated 99.92% reliability within three years⁶, and accelerated lifetime testing has demonstrated consistent performance for the Piezo Power transducer over time.⁷ This reliability is partly due to the design of the transducer, which has a completely different design to traditional transducers and the technology is designed to help deliver long-term performance and durability.⁸

The surgery

The Osia Implant has a slim profile and is fixed to a stable BI300 osseointegrated (fused to the bone) implant backed by more than 10 years of published clinical research.⁹

The Osia System is a straightforward procedure, and most people can go home the same day. There is no need for a preoperative CT scan, and the surgery won't cause any loss of the remaining hearing you may have in your ear.

MRI compatible

Many people need an MRI scan at some point in their life. With the OSI300 Implant, you're able to undergo high-resolution MRI scans at 1.5 and 3.0 T strength without the need to surgically remove your implant or implant magnet.[‡] Testing shows that the performance of the Piezo Power transducer remains consistent after MRI exposure.^{10,11}

[‡] Cochlear Osia implants are MR Conditional, meaning they have demonstrated safety in the Magnetic Resonance Imaging (MRI) environment within defined conditions. Always read the instructions for use and discuss with your doctor before undertaking any MRI procedure.

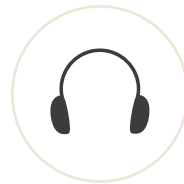


The Osia Implant has demonstrated 99.92% reliability within three years.⁶

It's time to hear what you've been missing

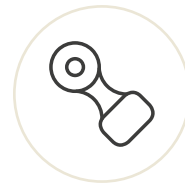
The World Health Organization (WHO) has said that disabling hearing loss can lead to feelings of loneliness, isolation and frustration. No matter what age you are, if you have disabling hearing loss, WHO recommends early intervention and treatment.¹²

If you decide to look into a bone conduction solution to help you hear, this is what will happen:



Hearing evaluation

You'll meet with a hearing health professional and complete a hearing test. If you are eligible for the Osia System, you'll be able to trial our hearing technology with Baha® Start, which offers a way of experiencing bone conduction without surgery.



Getting an implant

Once you've decided to move forward, you'll be scheduled for a surgical procedure.

Find useful tips and questions for your hearing health professional on www.cochlear.com before your surgery.



Sound processor fitting

About four weeks after surgery, you'll meet with an audiologist to have your sound processor fitted. It will be adjusted to match your hearing needs, and you'll be shown how it works. Then you'll be ready to get out there and start hearing!

Talk to your hearing health professional today about trying bone conduction hearing before deciding on surgery.

“It's hard to explain to someone without hearing loss, but it was a relief to be able to engage with others like a person with full hearing.”

Adrian, Osia System recipient



“I feel like an agent of change”

Gabriela suddenly lost her hearing in her left ear in 2020. This is her story:

“It was very traumatic. I felt ashamed. I had lost one of my work tools,” the 32-year-old analytical psychologist said. “I’ve always said that one of my biggest fears was losing my hearing.”

“I had to face it head-on and look for a technology that could help me. And I needed to accept my deafness. I started doing tests with normal hearing aids, and they didn’t work for me at all. Then I tried a Baha sound processor and realized that this technology could help me.

On the activation day, the audiologist spoke to me on my left side. And I was able to hear her and understand that she was speaking to me from the left side.

What I like the most about the Osia is how practical it is. I no longer have to consider where I sit if I’m in a restaurant for example. I can hear people on both sides of me again. It’s also very discreet so my patients rarely even notice it’s there.

When I put on my Osia Sound Processor, I feel strong. I feel strong because I went through this, and I’ve come out on the other side accepting my hearing loss and found technology that helps me. I feel like an agent of change.”

“I can hear people on both sides of me again.”

There is a large community of people who have been exactly where you are and want to support you and share their stories. To connect with a mentor: www.cochlear.com/us/connect-with-a-mentor

Cochlear Care

Providing a lifetime of support when and where you need it.



Enjoy personalized services and information with the Cochlear Family

By activating your free Cochlear Family account, you'll have personalized access to tips, tools and resources. You'll connect with other Cochlear Family members, and you'll enjoy the peace of mind that comes from knowing we're with you every step of the way.

Visit www.cochlear.com/us/family



Anytime, anywhere access to important information with myCochlear

As part of the Cochlear Family, you will have access to a convenient online resource called myCochlear. Your myCochlear account provides you with information about your specific device, including warranty and upgrade information, troubleshooting tips, as well as special promotions.



Cochlear Concierge can answer your questions

A team of experts is ready to answer your questions and assist you in learning about the process, our products, technology and company.

Call 800 216 0228 or email concierge@cochlear.com



Insurance process support and direct insurance billing

You will have access to our specialized team that can help you obtain insurance approval or support appeals when coverage for one of Cochlear's implantable hearing solutions has been denied. In addition, we offer direct billing services to your insurance company for upgrades to help make the payment and insurance claim process easier.

Visit www.cochlear.com/us/insurance



Fast service with Hear Always

Your clinic and Cochlear want to make sure you experience sound uninterrupted, which is why we partnered on the exclusive Hear Always program. Hear Always ensures expedited replacement of your sound processor if you are ever without sound.



Robust hearing therapy resources on the Communication Corner

The Communication Corner is our extensive hearing therapy website which provides materials and activities for all levels to help you improve your listening and communication skills. It includes a range of practice tools, as well as an assessment that provides guidance on where to start and which program is best for you.

Visit www.cochlear.com/us/commcorner



Get quality care anywhere with Cochlear Remote Care

Cochlear Remote Care solutions offer simple and convenient ways for your hearing health professional to support you without a clinic visit. Using your compatible smartphone*, you can access care where and when it's convenient for you—whether you're at home, at work, or away.

*The Cochlear Osia Sound Processor is compatible with Apple devices. The Cochlear Osia Smart App is available on the App Store. For compatibility information visit www.cochlear.com/compatibility.

Hear now. And always

Cochlear is dedicated to helping people with moderate to profound hearing loss experience a world full of hearing. As the global leader in implantable hearing solutions, we have provided more than 700,000 devices and helped people of all ages to hear and connect with life's opportunities.

We aim to give people the best lifelong hearing experience and access to next generation technologies. We collaborate with leading clinical, research and support networks to advance hearing science and improve care.

That's why more people choose Cochlear than any other hearing implant company.

References

1. Lewis A, Vanaelst B, Hua H, et al. Success rates in restoring hearing loss in patients with chronic otitis media: A systematic review. *Laryngoscope Investig Otolaryngol.* 2021;6(3):522–530.
2. Osia System Piezo Power Transducer Whitepaper, Cochlear Limited, Australia. 2023; D2007366
3. Gawliczek T, Wimmer W, Caversaccio M, Kompis M. Influence of maximum power output on speech understanding with bone anchored hearing systems. *Acta Otolaryngol.* 2020;140(3):225–229.
4. Van Eeckhoutte M, Folkeard P, Glista D, Scollie S. Speech recognition, loudness, and preference with extended bandwidth hearing aids for adult hearing aid users. *Int J Audiol.* 2020 20;1–12.
5. Cochlear Americas. Osia System Recipient experience survey. Cochlear Limited, Sweden. 2022; D2049511.
6. Cochlear Limited. Osia Reliability Report. Cochlear Limited, Sweden. 2023; D1841762.
7. Cochlear Limited. OSI200 Implant Accelerated Life Test Report. Cochlear Limited, Australia. 2019; D1439967.
8. Cochlear Limited. Osia OSI200 Implant Technical Brief. Cochlear Limited, Sweden. 2020; D1602089.
9. Andersson V. Literature search and evaluation: BI300 implant years and survival rate. Cochlear Limited, Sweden. 2019; D1322539.
10. OSI300 1.5 T MRI Verification Summary Report. Cochlear Limited, Australia. 2023; D2084831
11. OSI300 3 T MRI Verification Summary Report. Cochlear Limited, Australia. 2023; D2084832
12. World report on hearing. Geneva: World Health Organization; 2021. License: CCBY-NC-SA 3.0 IGO.

This material is intended for health professionals. If you are a consumer, please seek advice from your health professional about treatments for hearing loss. Outcomes may vary, and your health professional will advise you about the factors which could affect your outcome. Always read the instructions for use. Not all products are available in all countries. Please contact your local Cochlear representative for product information.

Views expressed are those of the individual. Consult your health professional to determine if you are a candidate for Cochlear technology.

In the United States and Canada, the Osia System is cleared for children ages five and older.

* The Aqua+ accessory is a silicone casing that covers your sound processor to let you get involved in water activities with family and friends. With an Aqua+ accessory, the Osia 2 and 2(I) Sound Processors are water resistant down to almost 10 feet. The Cochlear Osia 2 Sound Processor, with battery compartment excluded, is dust and water resistant to level IP57 of the International Standard IEC60529. The Osia 2 and 2(I) Sound Processor with Aqua+ are water resistant to level IP68 when used with LR44 alkaline or nickel metal hydride disposable batteries. Refer to the relevant user guide for more information.

† Smartphones have become essential tools you use to connect with friends and family. With Made for iPhone technology, the Osia System becomes a simple extension of these devices, streaming sound directly to your sound processor from any compatible Apple® device. For Android™ and other smartphones, you can stream using our Cochlear True Wireless™ Phone Clip. For information regarding the compatibility of Cochlear's Sound Processors with Apple or Android devices, visit www.cochlear.com/compatibility. Cochlear's range of Smart Apps and Support Apps are available on App Store and/or Google Play. For information regarding the sound processors, operating systems and devices that are compatible with the Cochlear's range of Smart Apps and Support Apps, visit www.cochlear.com/compatibility.

Cochlear Sound Processors are compatible with Apple and Android devices. Cochlear Smart Apps are available on App Store and Google Play. For compatibility information visit www.cochlear.com/compatibility.

Android, Google Play and the Google Play logo are trademarks of Google LLC. The Android robot is reproduced or modified from work created and shared by Google and used according to terms described in the Creative Commons 3.0 Attribution License.

©2024. Apple, the Apple logo, FaceTime, Made for iPad logo, Made for iPhone logo, Made for iPod logo, iPhone, iPad Pro, iPad Air, iPad mini, iPad and iPod touch are trademarks of Apple Inc., registered in the U.S. and other countries. App Store is a service mark of Apple Inc., registered in the U.S. and other countries.

©Cochlear Limited 2024. All rights reserved. ACE, Advance OffStylet, AOS, Ardium, AutoNRT, Autosensitivity, Baha, Baha SoftWear, BCDrive, Beam, Bring Back the Beat, Button, Carina, Cochlear, 科利耳, コクレア, 코클리어, Cochlear SoftWear, Contour, コントウア, Contour Advance, Custom Sound, DermaLock, Freedom, Hear now. And always, Hugfit, Human Design, Hybrid, Invisible Hearing, Kanso, LowPro, MET, MP3000, myCochlear, mySmartSound, NRT, Nucleus, Osia, Outcome Focused Fitting, Off-Stylet, Piezo Power, Profile, Slimline, SmartSound, Softip, SoundArc, SoundBand, True Wireless, the elliptical logo, Vistafix, Whisper, WindShield and Xidium are either trademarks or registered trademarks of the Cochlear group of companies.

Cochlear Americas

10350 Park Meadows Drive, Lone Tree, CO 80124, USA
Tel: +1 303 790 9010 Support: Tel: +1 800 483 3123

Cochlear Canada Inc.

2500-120 Adelaide Street West, Toronto, ON M5H 1T1, Canada
Tel: +1 800 483 3123 Fax: +1 416 972 5083

www.cochlear.com/us



OSI020 ISS4 FEB24

Follow us on

