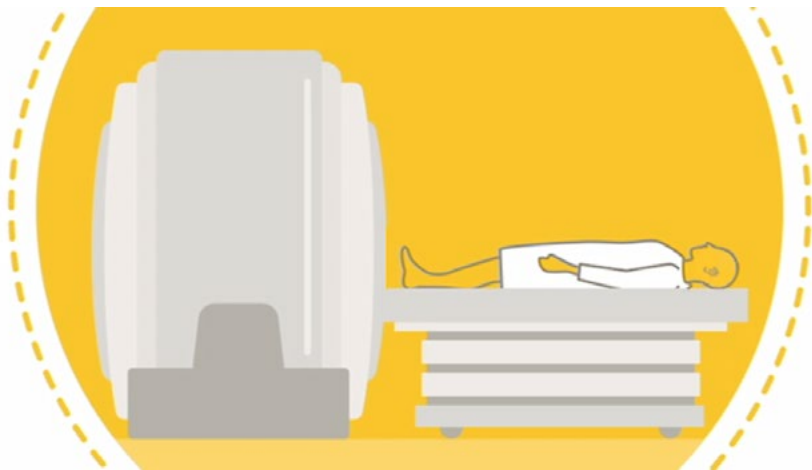


Radiographer's leaflet for MRI

Cochlear[™] Osia[®] System

OSI300, OSI200 and OSI100 Implants

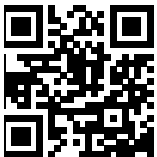
The Cochlear Osia System includes a bone conduction implant that uses a piezoelectric transducer to send sound directly to the cochlea.



This radiographer's leaflet for MRI does not replace the MRI Guidelines. For warnings and precautions, refer to the MRI Guidelines prior to conducting an MRI scan. Please read this information carefully.

Full MRI safety information is available:

- by visiting www.cochlear.us/mri for the latest MRI Guidelines and safety information
- or by calling your regional Cochlear office—contact numbers are available on the back cover of this guide



IMPORTANT: Begin with identification of the generation of the patient's Osia Implant.

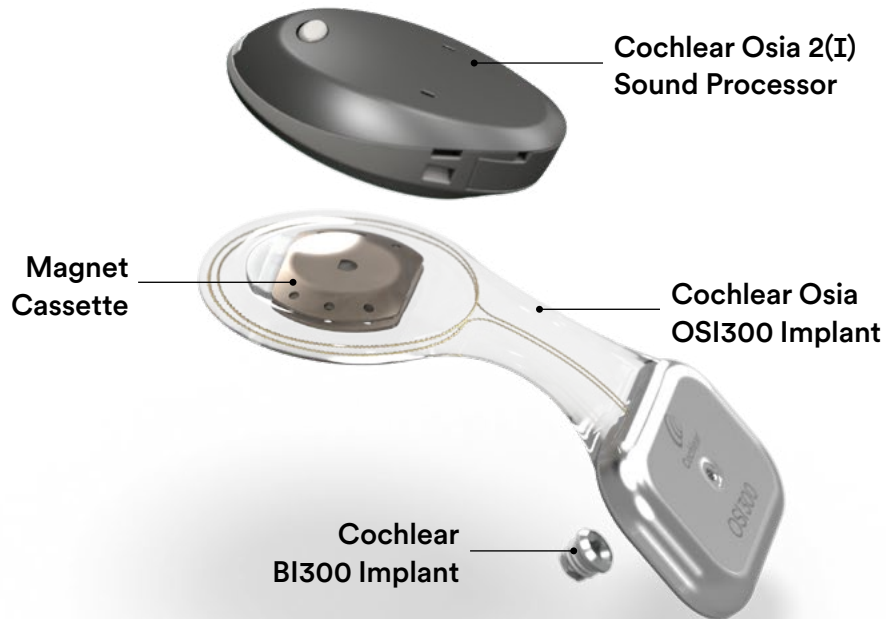
NOTE: Counsel the patient on sensations and positioning from the MRI Guidelines before removing the sound processor. Once the sound processor has been removed, the patient may have impaired hearing and/or struggle with further communication.

Cochlear Osia OSI300 Implant

This radiographer's leaflet for MRI does not replace the MRI Guidelines. For warnings and precautions, refer to the MRI Guidelines prior to conducting an MRI scan. Please read this information carefully.

Full MRI safety information is available:

- by visiting www.cochlear.us/mri for the latest MRI Guidelines and safety information
- or by calling your regional Cochlear office—contact numbers are available on the back cover of this guide



1.5 T scans and 3.0 T scans

- Review the MRI Guidelines for information on patient positioning and other critical safety instructions.
- The OSI300's implanted Magnet Cassette can remain in place during 1.5T and 3.0 T scans.
- OSI300 Implants do not require use of a headwrap or splint kit for scans at 1.5 T and 3.0 T.
- The sound processor is MR Unsafe. Remove the sound processor before entering the MRI scan room.

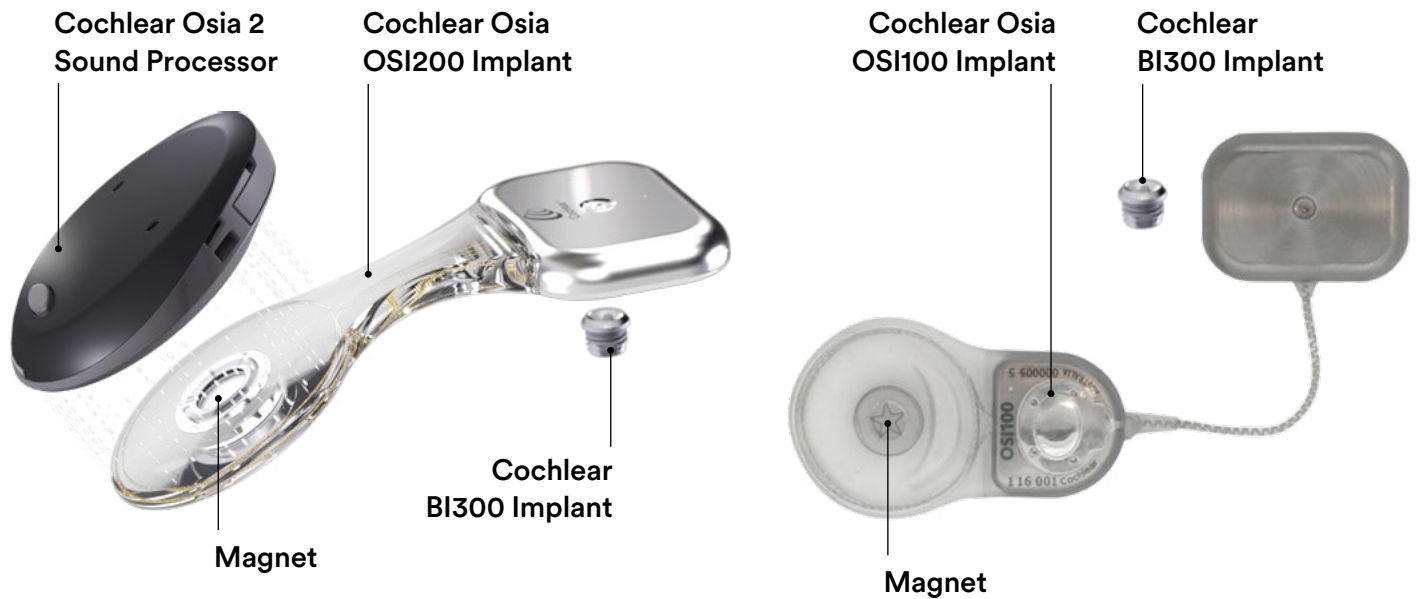
NOTE: Counsel the patient on sensations and positioning from the MRI Guidelines before removing the sound processor. Once the sound processor has been removed, the patient may have impaired hearing and/or struggle with further communication.

Cochlear Osia OSI200 and OSI100 Implants

This radiographer's leaflet for MRI does not replace the MRI Guidelines. For warnings and precautions, refer to the MRI Guidelines prior to conducting an MR scan. Please read this information carefully.

Full MRI safety information is available:

- by visiting www.cochlear.us/mri for the latest MRI Guidelines and safety information
- or by calling your regional Cochlear office—contact numbers are available on the back cover of this guide



1.5 T scans

- The OSI200 and OSI100 Implants are MR Conditional at 1.5 T with the implant magnet in place and the use of the Cochlear Osia MRI Kit, or with the implant magnet surgically removed.
- The sound processor is MR Unsafe. Remove the sound processor before entering the MRI scan room.

3.0 T scans

- The OSI200 and OSI100 Implants are MR Conditional at 3.0 T with the implant magnet surgically removed.
- The sound processor is MR Unsafe. Remove the sound processor before entering the MRI scan room.

NOTE: Counsel the patient on sensations and positioning from the MRI Guidelines before removing the sound processor. Once the sound processor has been removed, the patient may have impaired hearing and/or struggle with further communication.

Cochlear Osia MRI Kit

For use with OSI100 and OSI200 Implants

The healthcare professional applying the MRI Kit is an Ear, Nose and Throat (ENT) Surgeon.

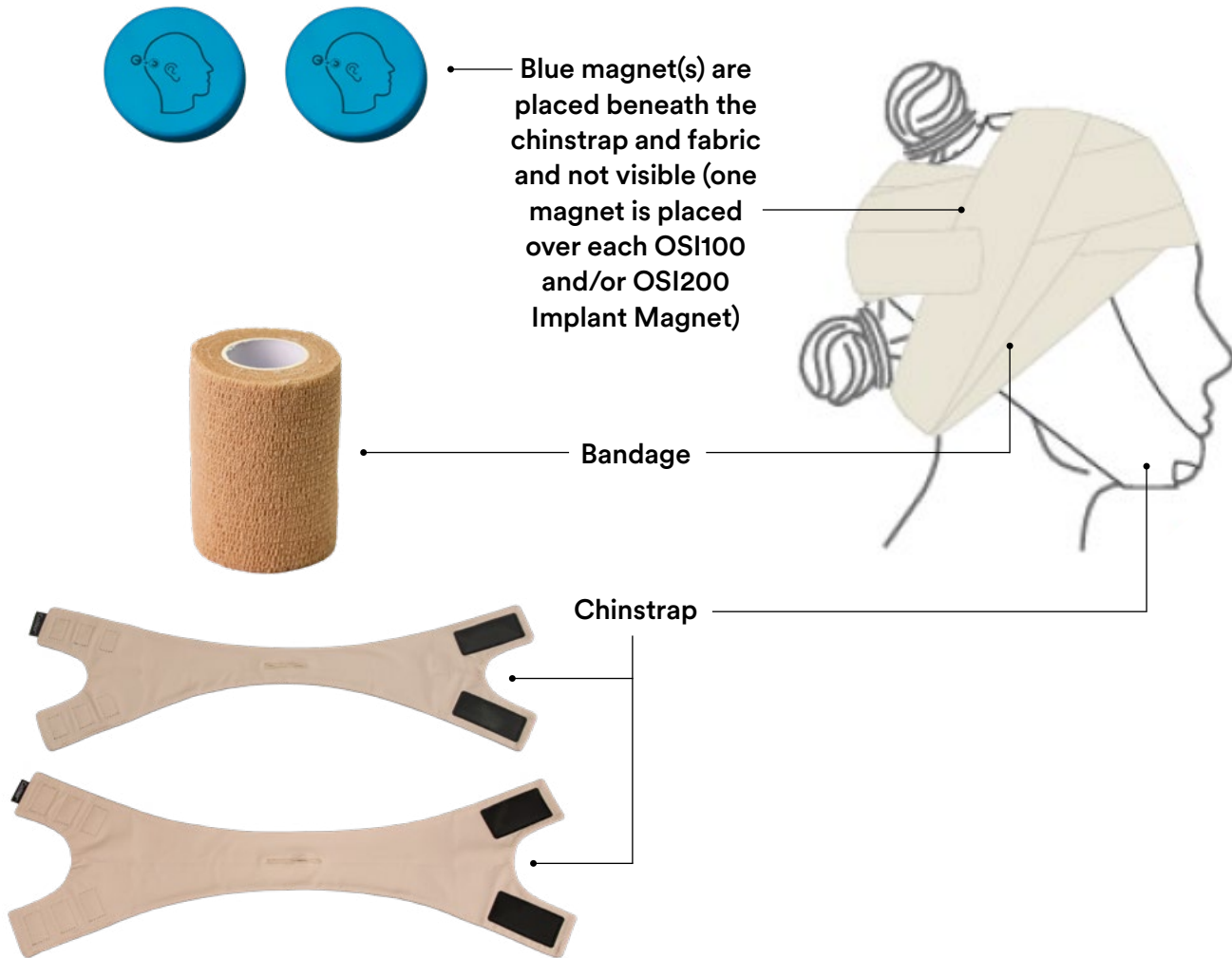
Obtaining an MRI Kit

An ENT may contact the nearest Cochlear office or official distributor to order an MRI Kit. Two blue magnet splints are also included within the Kit and will be covered by the bandage.

NOTE: Regulatory authorization and availability of the MRI Kit differs in respective markets.

The Cochlear Osia MRI Kit contains:

Example of MRI Kit in use:



Hear now. And always

Cochlear is dedicated to helping people with moderate to profound hearing loss experience a world full of hearing. As the global leader in implantable hearing solutions, we have provided more than 750,000 devices and helped people of all ages to hear and connect with life's opportunities.

We aim to give people the best lifelong hearing experience and access to next generation technologies. We collaborate with leading clinical, research and support networks to advance hearing science and improve care.

That's why more people choose Cochlear than any other hearing implant company.

The content of this guideline is intended as a guide for information purposes only and does not replace or remove clinical judgment or the professional care and duty necessary for each specific recipient case. The information has been prepared with reference to the best information available at the time of preparation. However, no assurance is given that the information is entirely complete or accurate in every respect. Clinical care carried out in accordance with this guideline should be provided within the context of locally available resources and expertise. This guideline does not address all elements of standard practice and accepts that individual clinicians are responsible to:

- advise recipients of their choice and ensure informed consent is obtained prior to delivering care
- provide care within scope of practice, meet all legislative requirements and maintain standards of professional conduct
- apply standard precautions, and additional precautions as necessary, when delivering care
- document all care in accordance with mandatory and local requirements.

This material is intended for health professionals. If you are a consumer, please seek advice from your health professional about treatments for hearing loss. Outcomes may vary, and your health professional will advise you about the factors which could affect your outcome. Always read the instructions for use. Not all products are available in all countries. Please contact your local Cochlear representative for product information.

©Cochlear Limited 2024. All rights reserved. ACE, Advance OffStylet, AOS, Ardium, AutoNRT, Autosensitivity, Baha, Baha SoftWear, BCDrive, Beam, Bring Back the Beat, Button, Carina, Cochlear, 科利耳, コクレア, 코클리어, Cochlear SoftWear, Contour, 콘트우아, Contour Advance, Custom Sound, DermaLock, Freedom, Hear now. And always, Hugfit, Human Design, Hybrid, Invisible Hearing, Kanso, LowPro, MET, MP3000, myCochlear, mySmartSound, NRT, Nucleus, Osia, Outcome Focused Fitting, Off-Stylet, Piezo Power, Profile, Slimline, SmartSound, Softip, SoundArc, SoundBand, True Wireless, the elliptical logo, Vistafix, Whisper, WindShield and Xidium are either trademarks or registered trademarks of the Cochlear group of companies.

Cochlear Americas

10350 Park Meadows Drive, Lone Tree, CO 80124, USA
Tel: +1 303 790 9010 Support: Tel: +1 800 483 3123

Cochlear Canada Inc.

2500-120 Adelaide Street West, Toronto, ON M5H 1T1, Canada
Tel: +1 800 483 3123 Fax: +1 416 972 5083

www.cochlear.com



OSI138 ISS2 NOV24

Follow us on     