

The Cochlear™ Baha® 5 Power Sound Processor

Meet Your Smaller, More Powerful Connection to Hearing



Hear now. And always



Cochlear®



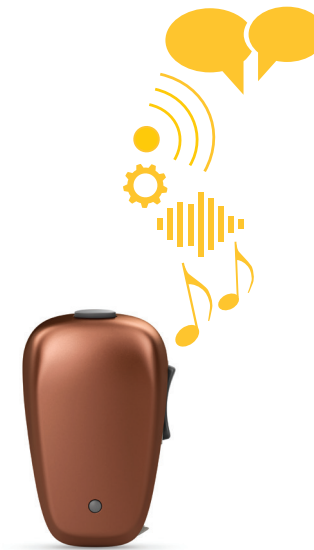
Debra B. – Baha recipient

Welcome to Cochlear!

Like any other family, we are connected by a commitment of trust and support, a commitment that has led you to this moment of excitement. A new hearing journey is ahead of you, and we are here to provide the tools and resources you'll need to get the most out of your new sound processor. Getting to know your new sound processor can be a lot like getting to know a new friend; the more time you spend together, the more you learn from each other. The next few pages will help you get acquainted with your new sound processor.

Starting today, you are more connected to a hearing world you may not have known before—a world controlled by you. Today, you decide where to sit at a crowded dinner table, it is no longer limited by your hearing loss. You decide which ear someone can whisper a secret into, not your hearing loss. Your hearing loss no longer dictates your social calendar or decides which activities you can and cannot do. Instead, the decisions are now yours to make.

**Meet your new connection to hearing—
The Baha® 5 Power Sound Processor.**



Activate Your
Cochlear Family Account Today!

www.Cochlear.com/US/Family

Your Baha 5 Power Sound Processor at a Glance

Components



Changing the Battery

Gently open battery door; remove old battery and place new battery in battery door tray with the positive (+) side up (*pictured*). Requires non-rechargeable type 675 zinc-air battery. Battery life will vary based on wireless accessory use, programming, or sound environments.



The Baha 5 Sound Processor uses a non-rechargeable type 675 zinc-air battery. The batteries included in the sound processor kit reflect Cochlear's latest recommendations.

Safety Line

When taking part in activities where you risk losing your sound processor, we recommend using the safety line provided. Insert the line into the attachment point and fasten it to your clothing.



Note: The safety line should always be used when a Baha Sound Processor is worn by children and is recommended for those with the Baha Attract System.



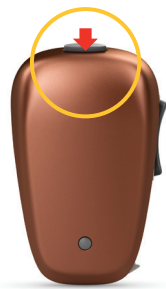
Shelley S. – Baha recipient

Our Simplest Processor Ever

Single Button Control

To change programs, simply press the button at the top of the processor.

To activate streaming of a paired wireless device, press and hold the same button for about two seconds, until you hear the audible melody.



Baha 5 Power Sound Processor

Easy On/Off Function

Processor is turned ON when battery door (located at the bottom of the processor) is closed.

Processor is turned OFF when battery door is open.

On



Off



Attaching and Removing Your Sound Processor

To attach, tilt and gently roll the processor's snap coupling into the abutment or Baha 5 Attract magnet, making sure not to force it. Do not push the processor straight in.

To remove, place one finger under the sound processor and one on top. Next, tilt and roll the sound processor away from the abutment or magnet. Do not pull the sound processor straight-out or straight-off.

Baha Connect System



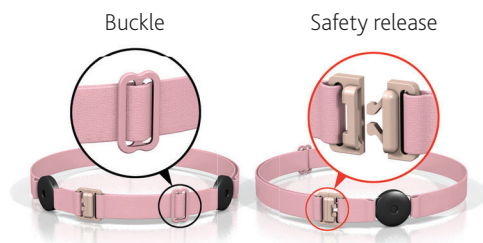
Baha Attract System



Softband Basics

Adjusting the Softband

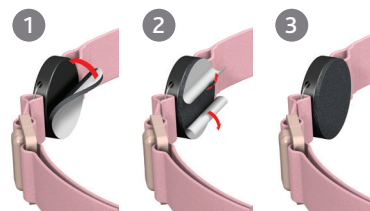
Slide strap through buckle to customize comfort.



Attaching Baha SoftWear™ Pads

For Baha Softband or Attract System users.

- Peel away single-paper cover to expose adhesive side and apply to the inside of the sound processor connector.
- Separate and pull paper strips away from pad.





Destiny G. & Emerson M. – Baha recipients

Hear Your Best—Automatically

Your Baha 5 Power Sound Processor is designed to use our revolutionary SmartSound® iQ technology, which automatically selects the appropriate program based on where you are and optimizes the sound to enhance

your hearing in that listening environment. Whether you're at work or in a noisy restaurant, you won't have to guess which setting is best; your sound processor will do it for you.



Speech in Loud Noise

Have a conversation in noisy surroundings like a busy café



Speech In Soft Noise

Chat after dinner while the dishwasher is running



Loud Speech

Make lively conversations more comfortable



Soft Speech

Enjoy a child's soft whispers



Soft Noise

Reduce the hum of background noise



Loud Noise

Hear comfortably in noisy situations



Quiet

Appreciate soft sounds in quiet environments

True Wireless™ Freedom. No Strings Attached.

The following is an overview of the Wireless Accessories designed to enhance a variety of listening environments.



TV Streamer

Connecting directly to your television's audio input, the TV Streamer will stream sound to your Baha 5 Power Sound Processor for a personalized viewing experience. Control the volume you hear via your Remote Control (*sold separately*) or the Baha Control App (*available on both the App StoreSM and Google Play*).



Mini Microphone 2+

A portable, discreet clip-on microphone that can help speech understanding in a variety of settings. It streams a speaker's voice directly to your processor, making it ideal for noisy social engagements or for a teacher to use in a classroom.



Phone Clip

Provides a hands-free connection to your smartphone and other Bluetooth® enabled devices. In addition to streaming the call directly to your processor, it also uses its microphone to stream your voice back to the caller for a seamless conversation. It can also change your processor's volume and program.



Remote Control

Gives you hands-on control of your processor settings, such as volume or programs. Also provides another control option for other Cochlear Wireless Accessories.

For specific pairing and streaming instructions, please refer to the Accessory Guides included in your sound processor kit.

A Smart Connection to the Devices You Love.

Did you know you can control your sound processor with your smartphone? Here are three options designed to enhance your hearing experience and allow discreet control of certain sound processor settings.



Baha Smart App

For iPhone®, iPad® and iPod touch®. Also available for select Samsung Galaxy 6 and 7 devices*

Allows you to control and personalize your sound processor. Use the Smart App to:

- Change programs
- Adjust volume, treble, and bass for your sound processor and accessories
- Save custom settings and link the personalized settings to a specific location with geotagging
- Find your misplaced sound processor
- View sound processor information and usage
- Get support

*With Lollipop and Marshmallow Operating Systems. Check our website, Cochlear.com for updates.



Baha Control App**

For iPhone®, iPad® and iPod touch® and Android smartphones

Allows you to adjust your sound processor. Use the Control App to:

- Adjust volume and/or mute your processor or wireless accessories
- Store wireless accessory settings
- Activate streaming on your sound processor by connecting to a Cochlear Wireless Phone Clip
- Store wireless accessory settings

**Requires Phone Clip

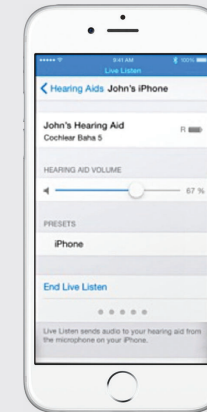
The Cochlear Baha 5 Smart App is compatible with iPhone 6/7 Plus, iPhone 6/7, iPhone 5s, iPhone 5c, iPhone 5, iPad Air 2, iPad Air, iPad (4th generation), iPad mini 3, iPad mini 2, iPad mini and iPod touch (5th generation) using iOS 8.1 or later.

The Cochlear Baha 5 Power Sound Processor is compatible with iPhone 6/7 Plus, iPhone 6/7, iPhone 5s, iPhone 5c, iPhone 5, iPad Air 2, iPad Air, iPad (4th generation), iPad mini 3, iPad mini 2, iPad mini and iPod touch (5th generation) using iOS 7.* or later.

Made for iPod iPhone iPad

Technology allows you to access built in features such as:

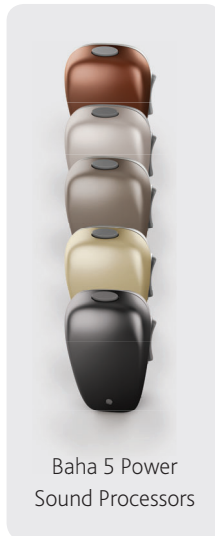
- Streaming music and audio from device to sound processor
- Stream incoming/outgoing calls or FaceTime®
- Control and adjust processor settings
- Turn your device into a portable microphone using Live Listen™



Product Warranties

Warranty claims depend upon registration of your product, and all accessories claims require a proof of purchase.

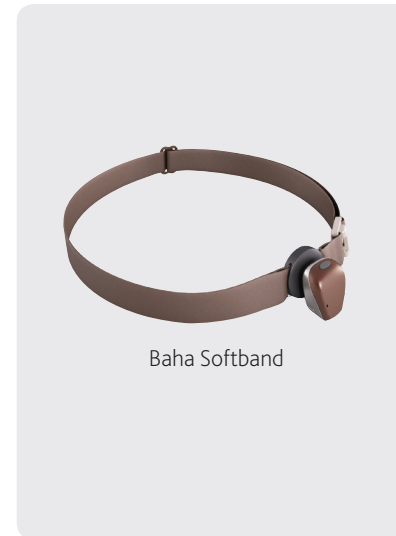
Two Years



One Year



90 Days



**For use with the Baha 5 Power Attract System*

Support Resources

Still can't find what you're looking for? Try these other resources.



Baha Support App

Available on the App Store or Google Play, the app gives you access to video tutorials, care instructions, and simple troubleshooting advice.

www.Cochlear.com/US/Family

Login to Cochlear Family through your myCochlear account. You will have personalized access to user guides, support videos, troubleshooting information, tips, practice tools and more!

Click or Call

Visit www.Cochlear.com/US and click the "Contact Us" button to connect with a Customer Support Representative.

Call 1 800 483 3123 for technical or general support.



Matthew V. – Baha recipient



Dennis K. – Baha recipient

Connect With Us and Other Baha Users!

Join the Cochlear Family

Activate your Cochlear Family membership to gain access to exclusive benefits designed to make your life easier, fuller, more joyful and more connected. Through Cochlear Family you get access to:

- Exclusive Promotions
- Personalized Customer Service
- myCochlear, a 24/7 support portal
- Care Service Plans
- Cochlear Celebration
- Hear Always

Activate your membership now at
www.Cochlear.com/US/Family

Register your Baha today

Stay connected with Cochlear! Cochlear offers many tools and guidance to help you with your Baha experience.

www.Cochlear.com/US/BahaReg

Subscribe to The Wire

Subscribe to our blog specifically for Cochlear recipients. Get the latest product updates, read about recipient stories and articles from Cochlear employees, take surveys and so much more.

www.Cochlear.com/US/TheWire

Watch Baha 5 Power Videos on YouTube

Watch videos and playlists that teach you more about your device, troubleshooting tips, experiences from other recipients, and so much more! Captioning available.

www.YouTube.com/CochlearAmericas

Join the Conversation

Follow us on social media to get up-to-date information, participate in contests, read inspiring stories, and of course comment, share, like and retweet!

www.Facebook.com/Cochlear

www.Twitter.com/CochlearUS

Hear now. And always

As the global leader in implantable hearing solutions, Cochlear is dedicated to bringing the gift of sound to people with moderate to profound hearing loss. We have helped over 450,000 people of all ages live full and active lives by reconnecting them with family, friends and community.

We aim to give our recipients the best lifelong hearing experience and access to innovative future technologies. For our professional partners, we offer the industry's largest clinical, research and support networks.

That's why more people choose Cochlear than any other hearing implant company.

www.Cochlear.com/US

Follow us on   

Cochlear Americas

13059 East Peakview Avenue
Centennial, CO 80111 USA
Telephone: 1 303 790 9010
Support: 1 800 483 3123



Cochlear Canada Inc.

2500-120 Adelaide Street West
Toronto, ON M5H 1T1 Canada
Support: 1 800 483 3123

©Cochlear Limited 2017. All rights reserved. Hear now. And always and other trademarks and registered trademarks are the property of Cochlear Limited or Cochlear Bone Anchored Solutions AB. The names of actual companies and products mentioned herein may be the trademarks of their respective owners.

Apple, the Apple logo, FaceTime, Made for iPhone, iPhone, iPad and iPod touch are trademarks of Apple Inc., registered in the U.S. and other countries. App Store is a service mark of Apple Inc.

© 2017 Google Inc. All rights reserved. Android and Google Play are trademarks of Google Inc.



BUN436 ISS4 NOV17