



## Cochlear™ MRI Kit

Key Information on use

*Hear now. And always*



# Cochlear™ MRI Kit



## Intended use

The Cochlear™ MRI Kit is intended to be used on Cochlear Nucleus implant recipients to prevent implant magnet dislodgement during MRI scans at 1.5 T as described in the MRI Guidelines.

The MRI Kit is for single-use only.

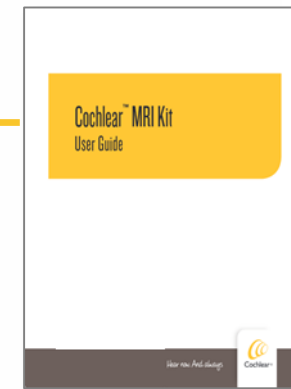
The MRI Kit is intended for use with the following Cochlear Nucleus implants for both unilateral and bilateral recipients:

- **CI500 Series** CI512, CI522, CI532 and ABI541
- **CI24RE Series** CI422, CI24REH (Hybrid L24), CI24RE (CA), CI24RE (CS) and CI24RE (ST)
- **CI24R Series** CI24R (CA), CI24R (CS), CI24R (ST)
- **CI24M Series** CI24M, CI11+11+2M and ABI24M
- **CI22 Series** CI22M (with removable magnet)



# MRI Kit content

**The MRI Kit contains:**

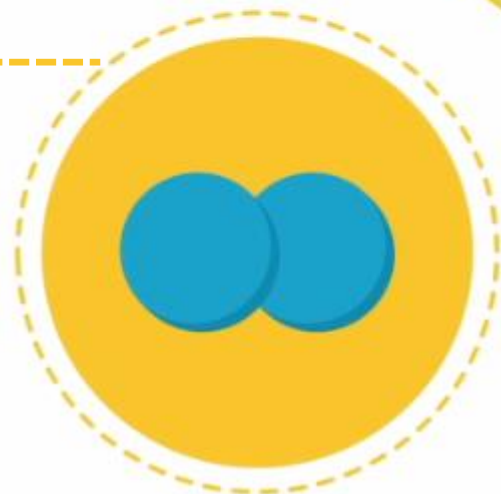


**Inbox IFU (EN)**

The User Guide includes instructions of use (IFU) on the application of the MRI Kit.

For information and parameters regarding the cochlear implant during MRI, refer to the MRI Guidelines.

**2x magnetic splints\***



**Compression Bandage**

\* Quantity considers bilateral patients. Only 1 magnetic splint is used per implant

The MRI Kit may not be available in all countries. Please contact your local Cochlear representative.

# Application

**Before going into the MRI Room**

# Before Entering the MRI Room



## Identify the type of implant

- Each implant has specific features and details that can help to identify the implant. Refer to the MRI Guidelines for implant identification.



CI600 Series

(The MRI Kit is not intended for use with the CI600 Series)\*



CI500 Series



CI24RE Series

Magnet

Implant Body

Electronic Assembly

## Remove the sound processor from the recipient's head



Be aware the patient will not be able to hear once the sound processor is removed.

Ensure they understand the procedure before removing the sound processor.

# Step 1. Locate the Implant Magnet



## Implant magnet location

- If the patient uses a behind-the-ear sound processor this is where the coil sits.
- If the patient uses as an off-the-ear sound processor this is where the sound processor sits.



Off-the-ear sound  
processor



Behind-the-ear  
sound processor

# Step 2. Position the Magnetic Splints



## Magnetic Splints

- Place the magnetic splint over the implant magnet. As you move the splint towards the implant magnet you will feel the magnetic attraction.



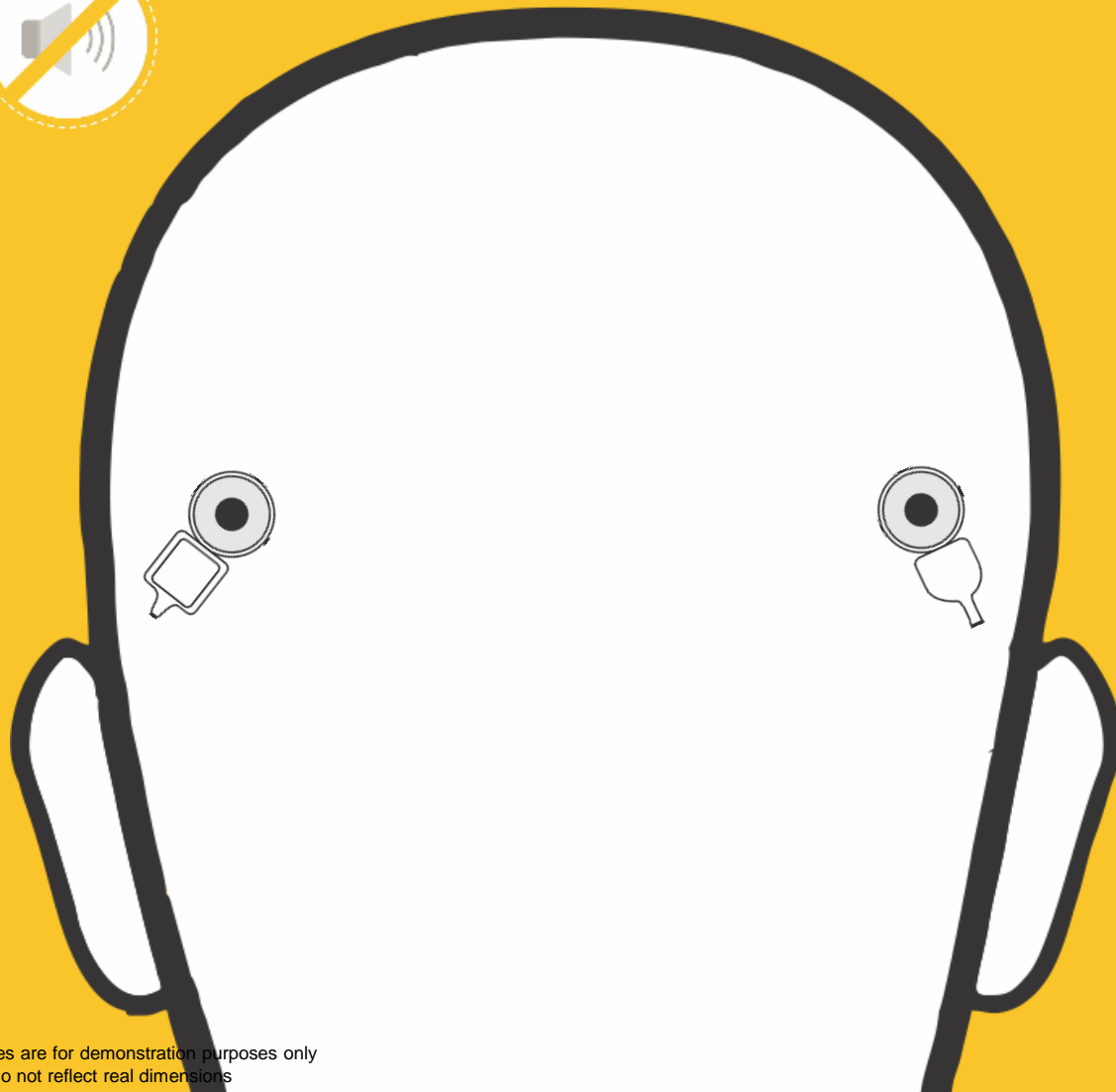
The magnetic splint should stay in place without any need to hold



*For better retention, move as much hair aside as possible*



# Step 2. Position the Magnetic Splints



## Bilateral Recipients

- If the recipient has two cochlear implants, follow the instructions in the MRI Guidelines for each implant model separately.
- Apply a magnet splint to whichever of the implants the MRI Kit is indicated for. This may mean that splints need to be applied to both implant magnet sites, or only one implant magnet site, or neither implant magnet site, depending on the models.

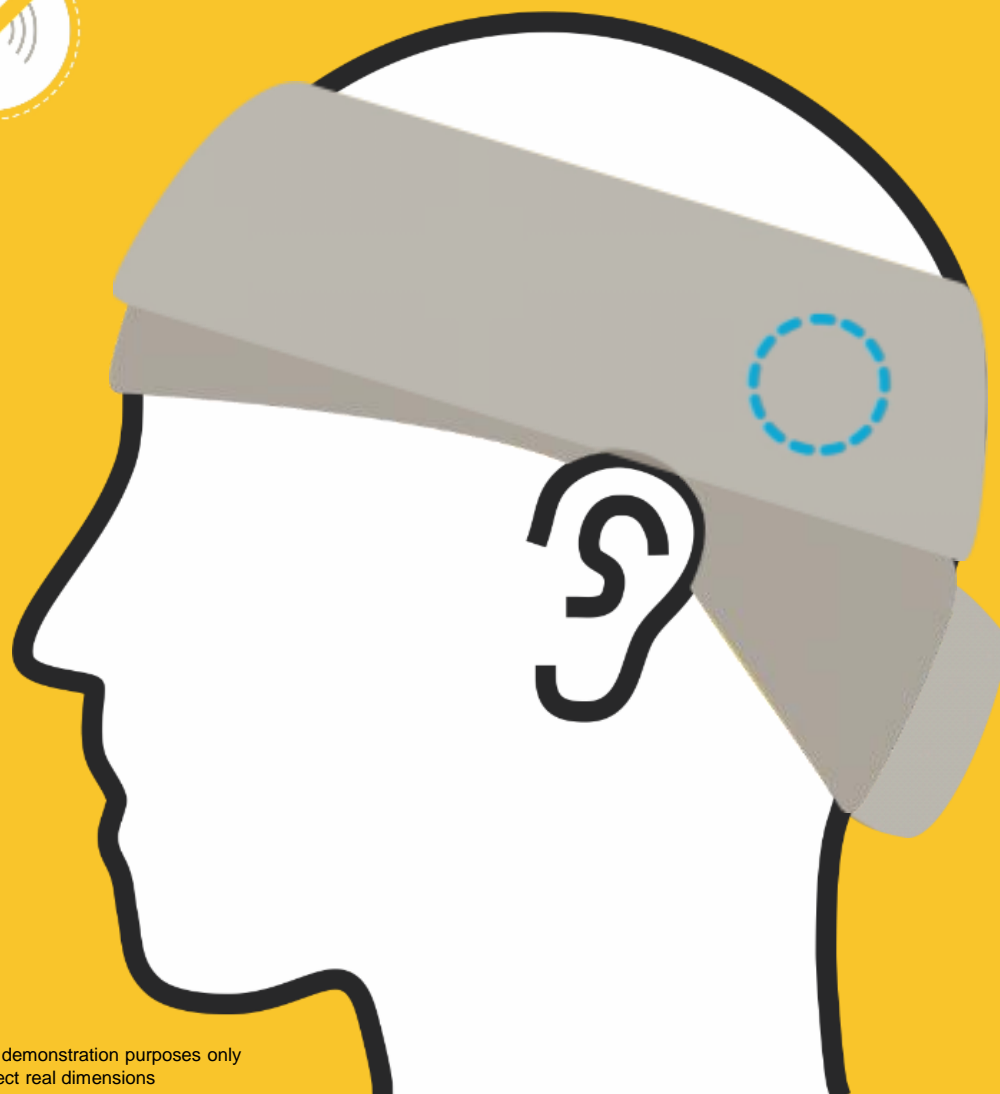
### Example of a case where the recipient has two different implants:

#### **1.5 T MRI for bilateral CI24RE and Profile Plus Series Implant recipient**

- A magnetic splint **must** be used with the CI24RE Implant.
- The Profile Plus magnet cassette can remain in place during MRI without the need of using a magnetic splint.
- The bandage (next step) may cover both implant magnet sites.



## Step 3. Apply Compression Bandage



### Compression Bandage

- The first wrap should start from the back of the skull and sit as low as possible on the forehead without covering the eyes.
- Continue bandaging around the head ensuring that with each wrap the splint is fully covered and does not move out of its place over the implant magnet.



***The bandage is self-adherent  
Do not wrap higher than the  
forehead***

# Step 3. Apply Compression Bandage



## Compression Bandage

- Ensure the splint is **fully covered** and does not move out of its place over the implant magnet.
- **Note that the bandage is self-adherent.**

### WARNING

**Do not conduct the MR scan if the splint/s do not stay in place. Misalignment between the splint and implant magnet may result in the dislodgment of the implant magnet and could cause pain or result in explantation.**

## Step 3. Apply Compression Bandage



### Compression Bandage

- Continue bandaging until the entire bandage has been used.
- **Do not cut the bandage.**
- The bandage should be wrapped firmly to ensure the splint/s do not move, but not too tight to cause pain.
- Once the bandaging is complete, carefully press your hands around the entire bandage to ensure it is secure and that the layers of the bandage have adhered. Use tape if needed.



**The recipient is now ready for MRI and can enter the magnetic field with their implant all secure**

# After the MRI scan



- Remove the bandage and splint.
- After the patient leaves the MRI room, ask the patient to place the sound processor on their head and turn it on.

**Confirm with patient after placing the sound processor back that there is no discomfort and that sound is perceived as normal.**



*Hear now. And always*

Please seek advice from your health professional about treatments for hearing loss. Outcomes may vary, and your health professional will advise you about the factors which could affect your outcome. Always read the instructions for use. Not all products are available in all countries. Please contact your local Cochlear representative for product information.

ACE, Advance Off-Stylet, AOS, AutoNRT, Autosensitivity, Beam, Bring Back the Beat, Button, Carina, Cochlear, 科利耳, コクレア, 코클리어, Cochlear SoftWear, Codacs, Contour, Contour Advance, Custom Sound, ESPrit, Freedom, Hear now. And always, Hugfit, Hybrid, Invisible Hearing, Kanso, MET, MicroDrive, MP3000, myCochlear, mySmartSound, NRT, Nucleus, Outcome Focused Fitting, Off-Stylet, Slimline, SmartSound, Softip, SPrint, True Wireless, the elliptical logo, and Whisper are either trademarks or registered trademarks of Cochlear Limited. Ardium, Baha, Baha SoftWear, BCDrive, DermaLock, EveryWear, SoundArc, Vistafix, and WindShield are either trademarks or registered trademarks of Cochlear Bone Anchored Solutions AB.

© Cochlear Limited 2020. D1720626 V1 2020-04